

I.I.S. VEGETATION STUDIES

RICHARD MOYROUD AND ROBERT W. EHRIG

The International Iguana Society Inc. in cooperation with the Gemini Botanical Garden in Palm Beach County, Florida has been conducting a study of West Indian vegetation of islands and cays which support or have supported populations of rock iguanas. To date, 13 Bahamian islands have been inventoried and cataloged. Species of vegetation are ranked according to their abundance. A description of each island, its estimated size, and highest elevation is recorded. Iguana droppings are examined to determine what the iguanas are eating and browse patterns are noted. As an increasing number of islands are inventoried a tremendous amount of practical information will be gained. A greater understanding of the ecology of the rock iguanas and their islands will result. The nutritional requirements of the iguanas and their ability to survive in these harsh environments will be better understood.

Flora Investigation Team

Richard Moyroud, Gemini Botanical Garden,
Manalapan, Florida
(*Exumas, San Salvador*)

Robert W. Ehrig, I.I.S.
(*Andros, Exumas, San Salvador*)

Tina Henize, Chuck Knapp, Shedd Aquarium, Chicago,
Illinois, and **Ron Harrod**
(*Exumas*)

Special thanks to

Dr. William Hayes, Biology Department, Southern
College, Collegedale, Tennessee

Dr. Ron Carter, Department of Natural Sciences, Loma
Linda University, Loma Linda, California

for allowing us to participate in the 1994 San Salvador
Rock Iguana Expedition.

Thanks to:

The Bahamas National Trust

The Bahamian Field Station, on San Salvador

Dr. Maurice Issacs, Department of Agriculture of the
Bahamas, Wildlife Division

Capt. Ron Harrod, the research vessel, *The Essence*

● = Very abundant ■ = Moderate ▲ = Uncommon ? = uncertain identification x = non-native

31 May 94

Richard Moyroud & Robert W. Ehrig
Green Key (San Salvador)

Estimated size: 11 acres, Elevation: 23 ft., Moderate population

- | | |
|--|----------------------|
| ● <i>Borrchia arborescens</i> | Sea Ox-eye Daisy |
| ▲ <i>Casasia clusiifolia</i> | Seven-year Apple |
| ■ <i>Coccoloba uvifera</i> | Seagrape |
| ● <i>Conocarpus erectus</i> var. <i>sericeus</i> | Silver Buttonwood |
| ▲ <i>Hymenocallis</i> sp. | Spider Lily |
| ● <i>Opuntia stricta</i> var. <i>dillenii</i> | Common Prickly-pear |
| ■ <i>Rhachicallis americana</i> | Hog-bush |
| ● <i>Sesuvium portulacastrum</i> | Seaside Purslane |
| ▲ <i>Spartina patens</i> | Saltmeadow Cordgrass |
| ■ <i>Sporobolus virginicus</i> | Seashore Dropseed |

NOTE: An alarming discovery was the presence of *Cactoblastis cactorum*, a species of moth that consumes pads of *Opuntia* cactus. Larvae of *Cactoblastis* were found on several colonies of cacti. Since cactus fragments were present in iguana droppings, the implications of this discovery are important since *Cactoblastis* c. could decimate the prickly-pear population on Green Cay. Most cactus pads infested were removed from plants and destroyed in an attempt to control this predator of the food plant of the islands.

27 May 94

Richard Moyroud & Robert W. Ehrig
Man Head Key (San Salvador)

Estimated size: 10 acres, Elevation: 34 ft., Small population

- | | |
|---|---------------------|
| ● <i>Ambrosia hispida</i> | Coastal Ragweed |
| ■ <i>Borrchia arborescens</i> | Sea Ox-eye Daisy |
| ■ <i>Casasia clusiifolia</i> | Seven-year Apple |
| ■ <i>Coccoloba uvifera</i> | Seagrape |
| ● <i>Cyperus</i> sp. | Sedge |
| ● <i>Erithalis diffusa</i> | Low Black Torch |
| ● <i>Jacquinia keyensis</i> | Joewood |
| ■ <i>Manilkara bahamensis</i> | Wild Dilly |
| ■ <i>Opuntia stricta</i> var. <i>dillenii</i> | Common Prickly-pear |
| ■ <i>Sporobolus virginicus</i> | Seashore Dropseed |
| ■ <i>Strumpfia maritima</i> | Strumpfia |

28 May 94

**Richard Moyroud & Robert W. Ehrig
Guana Key (San Salvador)**

Estimated size: 4.5 acres, Elevation: 14 ft., Very small population

▲ Argythamnia sp.	—
■ Borrchia arborescens	Sea Ox-eye Daisy
▲ Bourreria ovata	Strong-back
▲ Bumelia americana	Wild Saffron, Milk-berry
■ Casasia clusiifolia	Seven-year Apple
● Cephalocereus bahamensis	Torch Cactus
▲ Chiococca sp.?	—
■ Cocoloba diversifolia	Pigeon-plum
■ Conocarpus erectus	Green buttonwood
■ Conocarpus erectus var. sericeus	Silver Buttonwood
▲ Cyperus sp.	Sedge
■ Diospyros crassinervis	Boa-wood
▲ Distichlis spicata	Salt-grass
▲ Drypetes diversifolia	Milkbark, Whitewood
▲ Echites umbellata	Devil's Potato-root
■ Erithalis fruticosa	Black Torch
■ Eugenia foetida	Spanish Stopper
▲ Eugenia sp.	—
■ Euphorbia gymnonota	—
▲ Guapira discolor	Blolly
■ Hippomane mancinella	Manchineel
▲ Jacquinia keyensis	Joewood
▲ Lasiacis divaricata	Wild Bamboo
■ Manilkara bahamensis	Wild Dilly
■ Metopium toxiferum	Poisonwood
▲ Opuntia nashii	Nash's Prickly-pear
▲ Opuntia sp.	Prickly-pear
▲ Pavonia bahamensis	Bahama Swamp-bush
■ Phyllanthus epiphyllanthus	Hardhead
▲ Picramnia?	Bitterbush
▲ Pithecellobium keyense	Black Bead
▲ Pseudophoenix sargentii	Cherry Palm (one plant)
■ Reynosia septentrionalis	Darling Plum
■ Rhachicallis americana	Hog-bush
▲ Rhizophora mangle	Red Mangrove
■ Sesuvium portulacastrum	Seaside Purslane
▲ Smilax auriculata	Green-brier
■ Sporobolus virginicus	Seashore Dropseed
▲ Sporobolus sp.?	—
● Thrinax morrisii	Thatch Palm
■ Tillandsia utriculata	Giant Wild Pine
▲ Zizyphus taylori	—

29 May 94

**Richard Moyroud & Robert W. Ehrig
Low Key (San Salvador)**

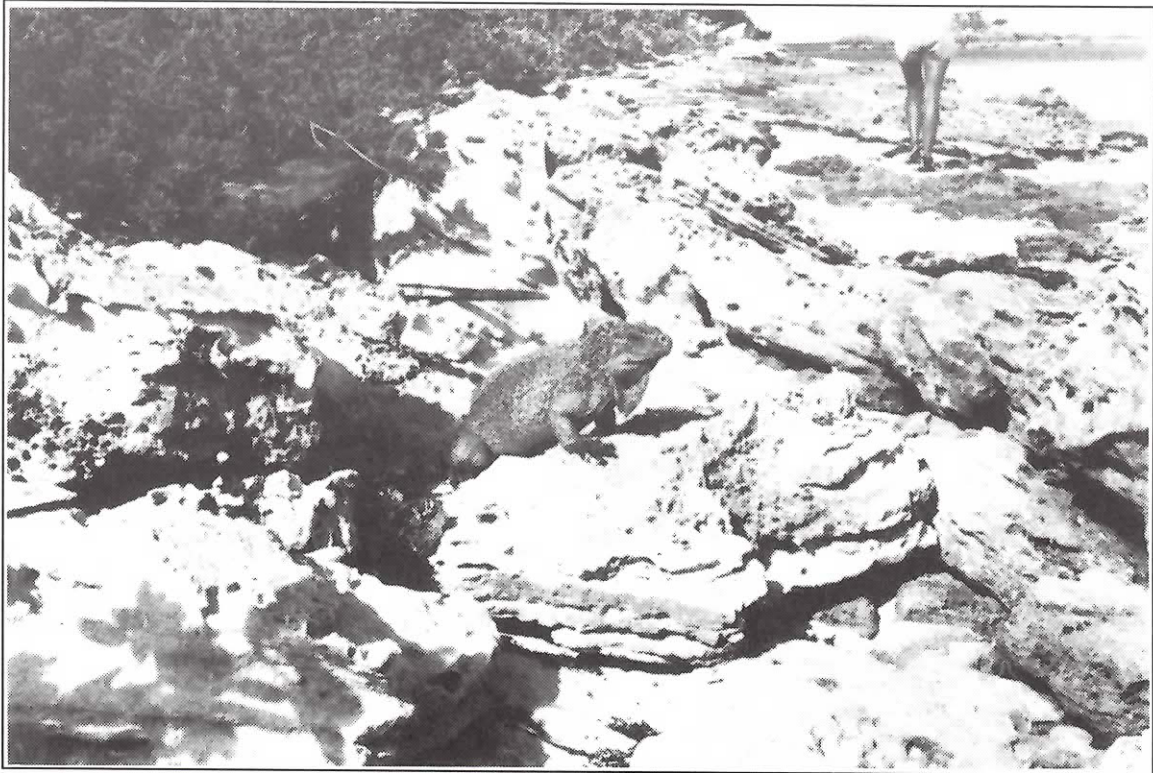
Estimated size: 24 acres, Elevation: 12 ft., Moderate population

■ Agave sp.	Agave
● Ambrosia hispida	Coastal Ragweed
▲ Argusia gnaphalodes	Sea Lavender
▲ Avicennia germinans	Black Mangrove
■ Borrchia arborescens	Sea Ox-eye Daisy
▲ Bumelia americana	Wild Saffron, Milk-berry
■ Cenchrus incertus	Sandspur
▲ Chamaesyce mesembryanthemifolia	Spurge
▲ Chamaesyce sp. 1	—
▲ Chamaesyce sp. 2	—
■ Cocoloba uvifera	Seagrape
▲ Conocarpus erectus	Green buttonwood
▲ Cynanchum bahamense	—
▲ Cyperus sp.	Sedge
▲ Distichlis spicata	Salt-grass
▲ Eleusine indica?	Goosegrass
▲ Guapira discolor	Blolly
▲ Ipomoea imperati	Fiddleleaf Morning Glory
● Ipomoea violacea	Coastal Moon-vine
▲ Manilkara bahamensis	Wild Dilly
▲ Opuntia nashii	Nash's Prickly-pear
● Opuntia stricta var. dillenii	Common Prickly-pear
▲ Pithecellobium keyense	Black Bead
▲ Scaevola plumieri	Inkberry
● Sesuvium portulacastrum	Seaside Purslane
■ Spartina patens	Saltmeadow Cordgrass
■ Sporobolus virginicus	Seashore Dropseed
▲ Suriana maritima	Bay Cedar
● Uniola paniculata	Sea Oats
■ Ximenia americana	Hog Plum

NOTE: Evidence of the past presense of *Cactoblastis cactorum*, was found on the east end of the island. Several large skelotonized trunks of *Opuntia nashii* were examined. No active infestations were found.



● = Very abundant ■ = Moderate ▲ = Uncommon ? = uncertain identification x = non-native



29 May 94
Richard Moyroud
Middle Key (San Salvador)

Estimated size: 9 acres, Elevation: 21 ft., No population

- | | |
|---|---------------------|
| ● <i>Ambrosia hispida</i> | Coastal Ragweed |
| ■ <i>Argusia gnaphalode</i> | Sea Lavender |
| ■ <i>Borrchia arborescens</i> | Sea Ox-eye Daisy |
| ■ <i>Casasia clusiifolia</i> | Seven-year Apple |
| ■ <i>Chamaesyce</i> sp. | Spurge |
| ▲ <i>Cyperus</i> sp. | Sedge |
| ▲ <i>Distichlis</i> sp.? | — |
| ▲ <i>Erithalis diffusa</i> | Low Black Torch |
| ▲ <i>Ipomoea pes-caprae</i> | Railroad Vine |
| ■ <i>Ipomoea violacea</i> | Coastal Moon-vine |
| ■ <i>Opuntia stricta</i> var. <i>dillenii</i> | Common Prickly-pear |
| ▲ <i>Portulaca</i> sp. | Purslane |
| ▲ <i>Rhizophora mangle</i> | Red Mangrove |
| ▲ <i>Scaevola plumieri</i> | Inkberry |
| ■ <i>Sesuvium portulacastrum</i> | Seaside Purslane |
| ▲ <i>Solanum bahamense</i> | Bahama Nightshade |
| ▲ <i>Suriana maritima</i> | Bay Cedar |
| ▲ <i>Uniola paniculata</i> | Sea Oats |



Thanks to Scott Delay for logistical support.

1 June 94

**Richard Moyroud
High Key (San Salvador)**

Estimated size: 28 acres, Elevation: 62 ft., No population

● Ambrosia hispida	Coastal Ragweed
▲ Argusia gnaphalodes	Sea Lavender
● Borrchia arborescens	Sea Ox-eye Daisy
▲ Capraria biflora	Goat Weed
● Casasia clusiifolia	Seven-year Apple
■ Cassytha filiformis	Love Vine
■ Cenchrus incertus	Sandspur
■ Chamaesyce mesembryanthemifolium	Spurge
■ Chamaesyce sp.	Spurge
● Cocoloba uvifera	Seagrape
▲ Cocos nucifera (x)	Coconut
■ Commicarpa scandens	—
■ Croton (2 spp.)	—
■ Cynanchum bahamense?	—
■ Cyperus (2 spp.)	Sedge
▲ Echites umbellata	Devil's Potato
▲ Erithalis diffusa	Low Black Torch
■ Erithalis fruticosa	Black Torch
▲ Eupatorium sp.	—
▲ Eustoma exaltatum	Seaside Gentian
▲ Ficus citrifolia	Shortleaf Fig
▲ Guapira discolor	Bolly
■ Gundlachia corymbosa	Horse Bush
● Hymenocallis sp.	Spider Lily
● Ipomoea pes-caprae	Railroad Vine
● Ipomoea violacea	Coastal moon-vine
■ Iresine flavescens	Coastal Iresine
■ Iva imbricata	Beach Elder
■ Jacquemontia havanensis	—
■ Lantana involucrata	Wild Sage
▲ Opuntia nashii	Nash's Prickly-pear
■ Opuntia stricta var. dillenii	Common Prickly-pear
▲ Paspalum distichum?	Knot Grass
■ Paspalum sp. (RED)	—
▲ Portulaca sp.	Purslane
● Scaevola plumieri	Inkberry
● Sesuvium portulacastrum	Seaside Purslane
■ Solanum bahamense	Bahama Nightshade
■ Spartina patens	Saltmeadow Cordgrass
● Sporobolus virginicus	Seashore Dropseed
■ Suriana maritima	Bay Cedar
■ Uniola paniculata	Sea Oats
■ Urechites lutea	Wild Allamanda
▲ Ximenia americana	Hog Plum

Thanks to Tim Haack for logistical support.


● = Very abundant ■ = Moderate ▲ = Uncommon
? = uncertain identification x = non-native

I.I.S. Bookstore

As a service to our members, a limited number of publications will be distributed through the I.I.S. Bookstore. The following publications are now available:

The Green Iguana Manual, by *Philippe de Vosjoli*. 1992. **\$7.00** (including postage); **\$8.75** (non-members)

Guide to the Identification of the Amphibians and Reptiles of the West Indies (Exclusive of Hispaniola), by *Albert Schwartz and Robert Henderson*. 1985. **\$19.00** (including postage); **\$27.00** (non-members)

Schwarze Leguane, by *Gunther Köhler*. 1993. **\$19.00** (including postage); **\$24.00** (non-members). Excellent Ctenosaur guide book, photographs, range maps, text in German. 

Send check or money order (payable to International Iguana Society) **to:**

I.I.S. Bookstore
Route 3, Box 328
Big Pine Key, FL 33043

National Reptile Expo

August 13 & 14
Orlando, Florida
Twin Towers Hotel and
Convention Center
800-327-2110

I.I.S. will have a booth.
For more information,
contact Wayne Hill at 813-294-2235.