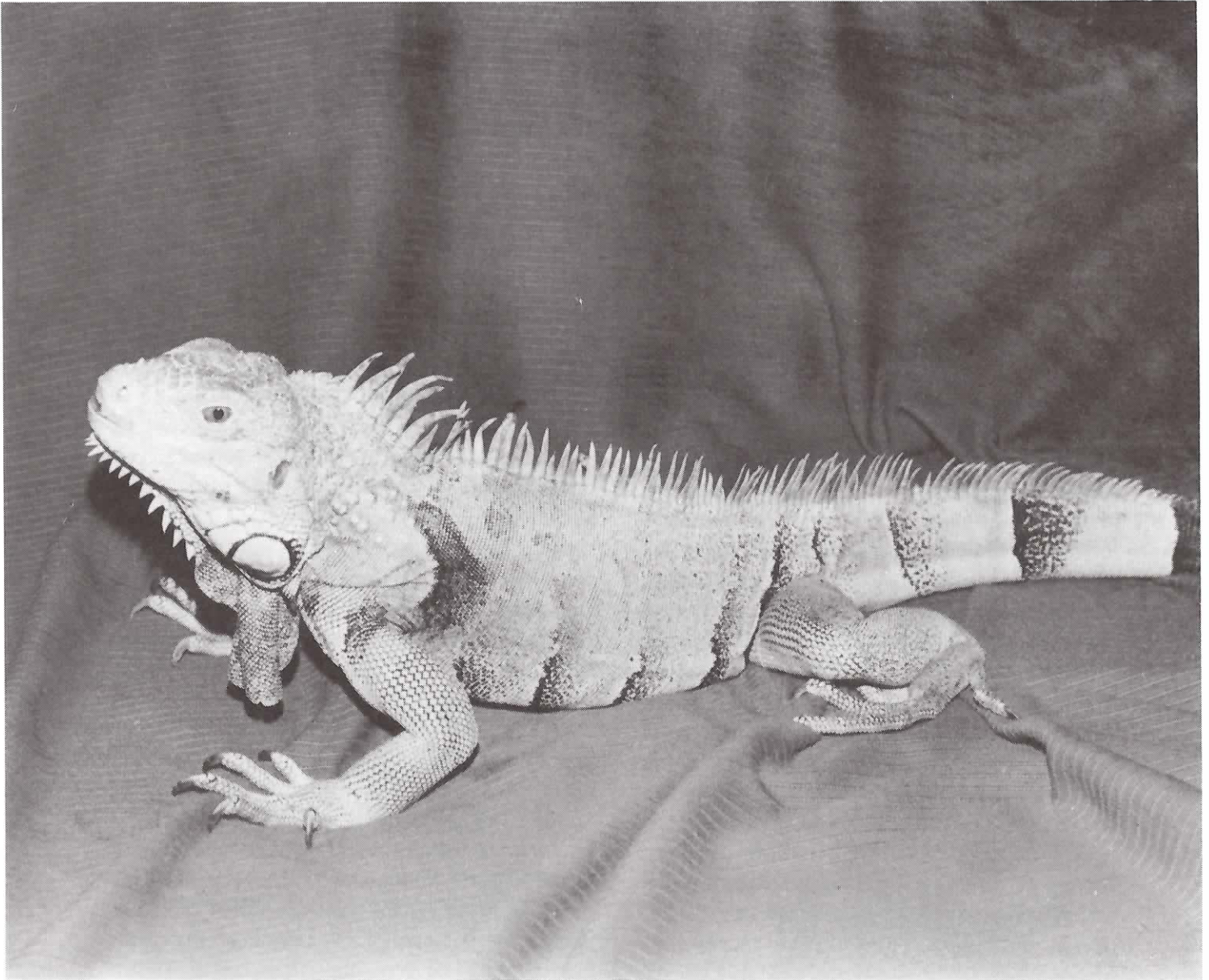


# Iguana Times

THE NEWSLETTER OF THE INTERNATIONAL IGUANA SOCIETY, INC.  
\$4.50

VOLUME 2, NUMBER 2  
MAY 1993



Male *Iguana iguana*.  
Photograph:  
Deborah Neufeld

# THE MATING BEHAVIOR OF IGUANA IGUANA

A CONDENSED VERSION OF A STORY BY GORDON H. RODDA

## Introduction

The green iguana, *Iguana iguana*, is well suited to interpopulational comparisons of its mating behavior because the species is widely distributed and easily observed. In addition to being diurnal and sedentary, the iguana mates in exposed locations (in trees) and its mating behavior appears to rely almost exclusively on vision, a modality readily monitored by human observers. Dugan (1980; 1982b) described mating behavior of green iguanas from a small island (Flamenco) in the Gulf of Panama. Males displayed with characteristic head-bobs, then jockeyed for possession of exclusive mating territories. Mating territories included no resources needed by females; they provided only space to mate. Precopulatory females visited several territories. One to four females selected the mating territory of each large male, and over 90% of the females eventually copulated there. Medium-size males rarely controlled territories with a female. Small males (which resemble females morphologically) obtained a few copulations by entering territories undetected and forcing copulations when the resident male was occupied or out of view.

The major goals of the present study were to provide a relatively complete record of mating behaviors in the green iguana and to compare the results of this study with the study of Panamanian iguanas by Dugan. In the llanos of Venezuela, iguanas often inhabit areas with scattered trees and discontinuous canopy, facilitating visual observation and recognition of individual iguanas. Dugan studied a large number of mating territories, each for short periods of the day. Dugan never observed males to mate more than once per day or to eat during the mating season. However, because she reported that feeding takes about 20 min per day

and that copulation lasts about 7 min, it is possible that these behaviors might have occurred when the animals were not under observation. Also, Dugan was not able to identify the individual female iguanas under study. By subjecting a smaller number of known individuals to continuous scrutiny, I was able to unequivocally determine the frequencies and context of selected rare, but potentially significant, behaviors. In combination with Dugan's work, these data provide the most detailed observations available for the mating behavior of a reptile.

This monograph is divided into four parts, each with a "Results" and "Discussion." To provide a context, the first short section, "Nonbreeding Behavior," describes typical green iguana behavior outside the breeding season. The second section, "General Mating Behavior," gives a general description of reproductive behaviors leading to copulation. (Some postcopulatory reproductive behaviors are described in Rodda (1990) and Rodda and Grajal (1990).) The third and fourth sections focus on two aspects of mating that present unresolved theoretical problems: "Forced Copulations" and "Female Dominance Relations." The methods section below describes the methods used throughout.

## Materials and Methods

My field assistants and I observed iguanas in the central llanos of Venezuela from June 1982 to January 1984. A blind was set up 50-100 m from 2-8 mating territories at each of three sites: El Frio, Guacimos, and Masaguaral. The areas chosen for observation had iguanas bearing sufficient natural markings that it was not necessary to capture iguanas for individual recognition (Rodda et al., 1988). The primary character used for individual recognition was the morphology of the damaged or unusual dorsal-crest scales. Crest scales are visible from

---

Gordon H. Rodda, National Ecology Research Center, 4512 McMurray Ave., Fort Collins, Colorado, 80525.

both sides of the animal and each scale was distinguishable on the basis of length (14 character states), attitude (6 states), curvature (6 states), and tip type (6 states; Rodda et al. 1988). Color pattern, tail regrowth, and other morphological idiosyncrasies provided supplemental recognition characters.

The three major study sites were observed periodically throughout the year. A fourth, "La Guanota," was observed opportunistically from a darkened automobile "blind" for information on gross population movements. At Guacimos, one mating territory was observed from before dawn until after dark throughout the 1983 copulation season to provide an uninterrupted record of mating behaviors. To verify that the results from this intensively monitored territory were representative, seven other Guacimos territories were scanned periodically throughout the day from the same blind. In addition, the Masaguaral and El Frio blinds each were used for several hours a day periodically during the 1982 and 1983 mating seasons. The Masaguaral site included two mating territories and was monitored almost every day during mating. At El Frio, the two territories within the study site were monitored for a few days each month. In sum, one Guacimos territory was observed continuously and eleven more territories (at Guacimos, Masaguaral, and El Frio) were observed with varying degrees of thoroughness for one or two mating seasons. The omission of a site from the results simply reflects an inadequate data base from the omitted site with reference to the question at hand. All contrary results are noted.

Subjecting one site to continuous observations for an entire mating season increases the opportunity for detecting rare but significant events such as copulations. The disadvantage of this technique is that a small number of individuals are sampled repeatedly. When it was possible to quantify the total amount of the variance contributed by individual identity, the contribution usually was found to be less than 15%. The most difficult problem of sample size arose in the analysis of dominant male behavior, because only one dominant male was monitored continuously. In this case, the general applicability of conclusions is based on similarity between the intensively monitored male's behav-

ior and that of the 11 other territorial males that were monitored less intensively.

### *Study Sites*

The Guacimos, La Guanota, and Masaguaral sites were located in the mixed savanna/woodland of the central llanos of Venezuela (habitat described in Neville, 1972). The Guacimos site (8.575°N, 67.605°W), was observed during all daylight hours from 30 November to 24 December 1983, and at varying hours of the day from 4 October 1983 to 12 January 1984, for a total of 756.5 h. Because iguanas sleep throughout the night (Flanigan, 1973), the more than 40,000 behaviors recorded at Guacimos are a complete record for the copulation season and a comprehensive record for several weeks immediately preceding and following the copulation season. One hundred twenty-three individual iguanas were seen at the Guacimos site during our observations.

The Masaguaral site (8.564°N, 67.588°W), about 3 km SE of Guacimos at the edge of a seasonal marsh, was observed at varying hours on 258 days from 12 September 1982 to 23 December 1983, for a total of 527.6 h. Almost all of the observations included the 2 h preceding sunset, an interval that yielded the greatest number of observable interactions among the iguanas. At Masaguaral we saw a total of 65 individual iguanas during 1982 and 73 during 1983. About half of the observations (138 days, 278.4 h) occurred during October-December, the months of mating activity.

The La Guanota site (6.92°N, 67.52°W) was located on the ranch "Hato La Guanota." The vegetation was similar to that in the above-mentioned study sites, but the trees were not near a water body. The iguanas were viewed for 1-2 h on each of 7 visits to the site from November 1982 to September 1983 (14 individuals seen).

The El Frio site (7.812°N, 68.897°W) was in a narrow gallery forest among the savannas of the low llanos on the ranch "Hato El Frio" (habitat described by Tamayo, 1964). The study trees, at the edge of an impounded stream, were observed at varying hours on 41 days between 22 September 1982 and 30 December 1983, for a total of 91.7 h. About half of the observations (21 days, 53.3 h) occurred during the mating season months of

October-December. We saw 28 individual iguanas in 1982 and 37 in 1983.

### *Behavioral Methods*

Four observers attempted to record all copulations, interactions, and movements within the study sites (typically a space of about  $10 \times 10 \times 10$  m). Headbob displays were recorded whenever possible. The fraction of the displays that were not recorded was estimated by comparing the written record with cine films of 44 sequences of interactions filmed during the peak of mating activity. Slow motion analysis of the films revealed that all copulations, interactions, and movements in the sample had been recorded, but only 66% (40 out of 61) of the displays had been noted. The estimated display totals reported in this paper are extrapolations from the tabulated counts.

At the beginning of the study, a few animals were captured and marked with colored beads, but these animals subsequently exhibited aberrant behavior (Rodda et al., 1988). Consequently, capture and marking was discontinued and all adult iguanas were recognized individually by their unique patterns of color and crest-scale damage or loss (Rodda et al., 1988). For the identifications made by more than one observer, interrater agreement exceeded 99.7% ( $N > 1000$ ).

The relative sizes of individuals were determined by noting which animal of a pair was larger whenever two individuals rested on a branch perpendicular to the observer. At Guacimos these pairings yielded 304 comparisons that were related to absolute dimensions from measurements of nine individuals captured at the conclusion of the study. The nine measured animals included the smallest and largest resident females as well as the second largest male; thus, the sizes of all of the residents at Guacimos are fairly precisely known because they are anchored by absolute measurements. The sizes of iguanas at the other sites are less precisely known, but each animal was readily classified as small, medium, or large based on their approximate absolute size based on direct observation.

Sexing was based on external dimorphisms; dorsal-crest spines, head size, and femoral pore size are larger in males (Dugan, 1980; Fitch and Henderson, 1977; Rodda, 1991). No nominal

“males” became gravid and all nominal “females” did so.

The positions of each iguana in a tree were recorded with reference to one of the mapped perches in the study site (207 perches were mapped in the intensively monitored tree at Guacimos). Absolute distances between animals were computed only for Guacimos, where the tree and its environs were photographed at a distance of 30 m from 18 equally spaced positions ( $0^\circ$ – $340^\circ \times 20^\circ$ ). A calibrated reference rod of known dimensions was central located in each photograph.

**OPERATIONAL DEFINITIONS.** — “Perch,” “approach,” “interaction,” and “copulation/attempt” have special meanings in this paper. A “perch” was an iguana-size segment of a tree limb or branch that was habitually used by resting iguanas. Initially, each limb was divided into 10, 20, or 100 equal sectors, depending on the limb’s absolute length. Records of the positions of resting iguanas were accumulated until clusters of positions became clearly evident for each limb. Perches were based on the modal position within clusters, with the restriction that each perch was sufficiently distant from the immediately adjacent perch that occupancy of one would not physically preclude occupancy of the adjacent perch.

An “approach” was a movement of an iguana from a more distant site to within 2 m of a specific iguana.

An interaction was said to have ended when either (1) the animals were no longer adjacent, or (2) 5 min had elapsed without any noticeable action. If the interaction involved more than two iguanas and the roles of the various iguanas were unclear the interaction was not scored. This occurred primarily when iguana densities were very high, so that the absolute number of interactions reported at high densities is an underestimate. Each interaction was scored on a scale of 1-5 for its outcome, with a “1” indicating that the approacher had fled rapidly from the site of the interaction (usually leaving the tree), and “5” indicating that the approached animal had fled rapidly (usually by jumping out of the tree). The interactions scored as 1 or 5 were categorized as “high intensity”; the other interactions were termed “low intensity.” A

“2” indicated that neither animal moved, a “3” indicated a slow or delayed upward movement of the approached animal (the modal response), and a “4” indicated a rapid but short distance movement of the approached animal (usually a displacement of a few perches).

A “copulation attempt” occurred when a male mounted another iguana. In two cases out of 250 a male mounted another male, which I assumed to be a mistake, because the attempt was quickly broken off and no other evidence of homosexual behavior was seen.

I use “mating” season to include the date of all behaviors preliminary to and including copulation; “copulation” season to include only the dates from earliest to latest copulation; and “breeding” season to include the seasons of both mating and postzygotic parental care (in this case, through oviposition).

## Nonbreeding Behavior

### Results

The behavior of iguanas outside the mating season differed from that seen during the mating season in three major ways: (1) during normal waking hours outside the breeding season, adult iguanas spent the majority of the time immobile, apparently resting; (2) their interactions involved fewer high intensity displays; and (3) their day to day movements were somewhat nomadic, with less attachment to a specific sleeping tree.

**DAILY ACTIVITY PATTERN.** — When sleeping, the iguanas usually lay horizon. July (23% of 509 sleep site selections) or with head up (75% of 509). Of 115 horizontal perch uses, I recorded about twice as many (75 vs 40) with the head pointed away from the base of the limb as pointed toward the limb base. Although iguanas prefer to sleep at the ends of branches and they prefer branches that extend over water, they showed no preference for specific branch angles or diameters from 1.5 cm diameter vines up to about 18 cm diameter limbs).

Iguanas slept throughout the night, as indicated by (1) continuously closed eyes, (2) greater arousal thresholds, and (3) continuous immobility. On 59 nights at Guacimos we observed 697 iguanas positions both at dusk and the following dawn. None of the iguanas changed perches. Iguanas

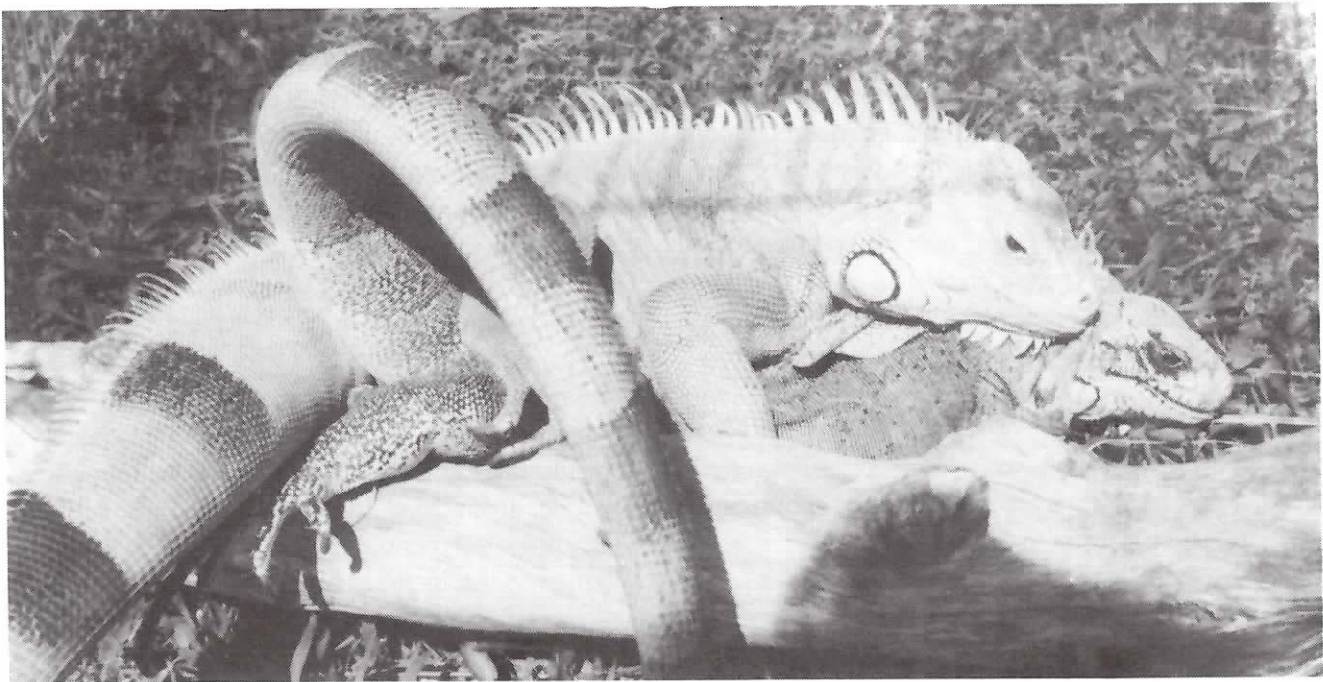
became immobile at dusk even if they were in the middle of social interactions when it became dark. The only circumstance in which we observed iguanas sleeping on top of each other was when the top individual had been climbing over the other at nightfall. On one of three such occasions a pair of iguanas were in the midst of a violent fight at dusk. The fight was not resumed at dawn; instead the iguanas disengaged and basked separately.

The iguanas opened their eyes before sunrise, but they did not move until direct sunlight provided an opportunity for them to bask. In emergent trees, this produced a peak of activity at sunrise. For example, from 5 to 20 November 1983 at the Guacimos site I recorded 92 movements in the 15 min interval that included sunrise, compared to only 9 movements during the 15 min interval 1 h later when the iguanas were in the midst of basking. I noticed, but did not quantify, exceptional wariness among the iguanas early in the day; flight distances of iguanas in trees seemed to be about 90 m at dawn compared to 50–60 m after the iguanas warmed up.

The iguanas routinely basked in a head down position. I was unable to determine if this was related specifically to basking or was simply a result of their morning descent of the tree. As they warmed, the iguanas made a series of short, intermittent moves toward the base of their sleeping tree.

I found it difficult to keep track of individual iguanas as they were foraging on the ground and in nearby trees and shrubs. Therefore, it was not possible to quantify the average time per day spent foraging. However, it was evident that much, if not most, of the foraging occurred on ground herbs and low shrubs. The iguanas quickly returned to the trees whenever humans or foxes approached to within 100–200 m, but it was uncommon for undisturbed iguanas to be high in trees during midday. During midday, the iguanas spent the majority of their time resting. I never saw individuals foraging for a period of greater than 30 min.

Unless disturbed by predators, the iguanas began returning to their sleeping trees two to three hours before sunset. Large iguanas usually arrived before the smaller ones ( $F = 6.16$ ;  $df = 1,25$ ;  $P = 0.020$ ), but arrival times did not differ between the sexes ( $F = 0.61$ ;  $df = 1,25$ ;  $P = 0.44$ ). The mean arrival time for the 25 iguanas present at Guacimos



Breeding couple, *Iguana iguana*, in captivity. Photograph: Deborah Neufeld

in October 1983 (this sample is characteristic of nonmating conditions) was 2.3 h before sunset for large iguanas and 1.7 h before sunset for small iguanas (i.e., < 350 mm snout-vent length (SVL)). The time of their last move of the day (to sleeping perches) did not vary between sizes or sexes.

Almost all interactions between nonbreeding iguanas were of low intensity and the outcome usually was predictable on the basis of which iguana was higher in the tree. Individual identities or relative sizes seemed unimportant. A typical afternoon interaction was initiated by an iguana climbing a branch at a slow pace until it reached a point immediately below a resting iguana. In a sample of 226 nonbreeding interactions, the approaching animal gave a headbob in 31% of the cases and the approached animal gave a headbob in 41% (the difference in these proportions was not significant).

In nonbreeding season interactions (N = 290) the modal outcome (33%) was no response (i.e., both iguanas remained stationary). However, if an iguana did move, it was much more likely that the animal that was initially stationary would move (55% vs 12%). In about 5% of the cases, the higher animal did not respond to being approached, but the lower animal eventually continued on its way by walking across the back of the higher iguana. The usual response of the walked-upon iguana was

to “scratch” or tail arch at the other animal as it passed by, or to bob after the interaction. A “scratch” consisted of swinging the forelimb in the general direction of the other iguana. One or both forelimbs might be used. These movements appeared to be ritualized, as the nominal recipient rarely was touched by the “scratching” animal and no damage was ever done.

I was unable to discern a hierarchy among the iguana individuals based on their success in convincing other iguanas to move ahead when they were ascending the study trees outside of the breeding season (see also “Female Dominance Relations”). At least three factors would make it difficult to identify individual relations if such exist outside the breeding season: (1) a majority of interactions did not have a decisive outcome, (2) the physical asymmetry in interactions (the higher animal usually moves) tended to obscure individual relations, and (3) as iguanas wander more during the nonbreeding season, there are few opportunities for two individuals to interact repeatedly. This wandering habit not only makes it unlikely that specific dyads would be observed repeatedly, but it also minimizes the opportunities for iguanas to develop consistent dominance relationships among themselves.

POPULATION CHARACTERISTICS. — Iguana densities differed among the sites in Venezuela and from the densities in Panama reported by Dugan (1980:32-37; 1982a; 1982b). Unfortunately, it was not appropriate to quantify the densities at the sites I studied in units of individuals per ha, as reported by Dugan. Dugan's site was a small, forested, coastal island over which the iguanas were relatively evenly dispersed. My sites, like most iguana habitats, were strips of trees along water courses. The iguanas foraged in adjacent shrubs and on the ground in the surrounding savannas, but they took refuge almost exclusively in the narrow tree corridors that rarely exceeded the canopy of one tree in width. Iguanas rarely ventured more than 50 m from riparian shrubs and most iguana activity occurred within 15 m.

At three of four sites, population turnover (daily percent of study population changing sleeping perch to a place outside of the monitored area) was relatively higher outside of the copulation season, while El Frio exhibited near-zero population turnover at any time. At La Guanota, all iguanas abandoned the trees used for breeding near the beginning of the rainy season but returned to this area by the middle of the rainy season. At all sites, males and females had different patterns of movements, with females changing locations more often

**Table 1.** — Nonmating season population sizes of iguanas in the territories shown in Figure 1. Letters in parentheses are territories in Figure 1.

	El Frio	Massguaral	Guacimos
Mean numbers of sleeping iguanas	1.8(A)	2.3(C)	10(AF)
	4.8(P)	3.2(AZ)	4.5(AG) 8(AL) 7(BF) 4.5(BJ) 5.5(BZ) 17(C) 12.4(H)
Total for site*	6.6	6.4	~80
Est. area of sleeping trees (hectares (ha))	0.02	0.01	0.035
Est. adjacent foraging area (ha)	0.10	0.05	0.175
Length of shoreline (km)	0.021	0.01	0.035
Linear density (iguanas/km)	314	640	2285
Areal density (iguanas/ha)	55	107	364
(area is sum of sleeping and foraging area)			

\* Does not equal sum of territory totals because many iguanas slept in areas that did not become a mating territory.

than males throughout the year.

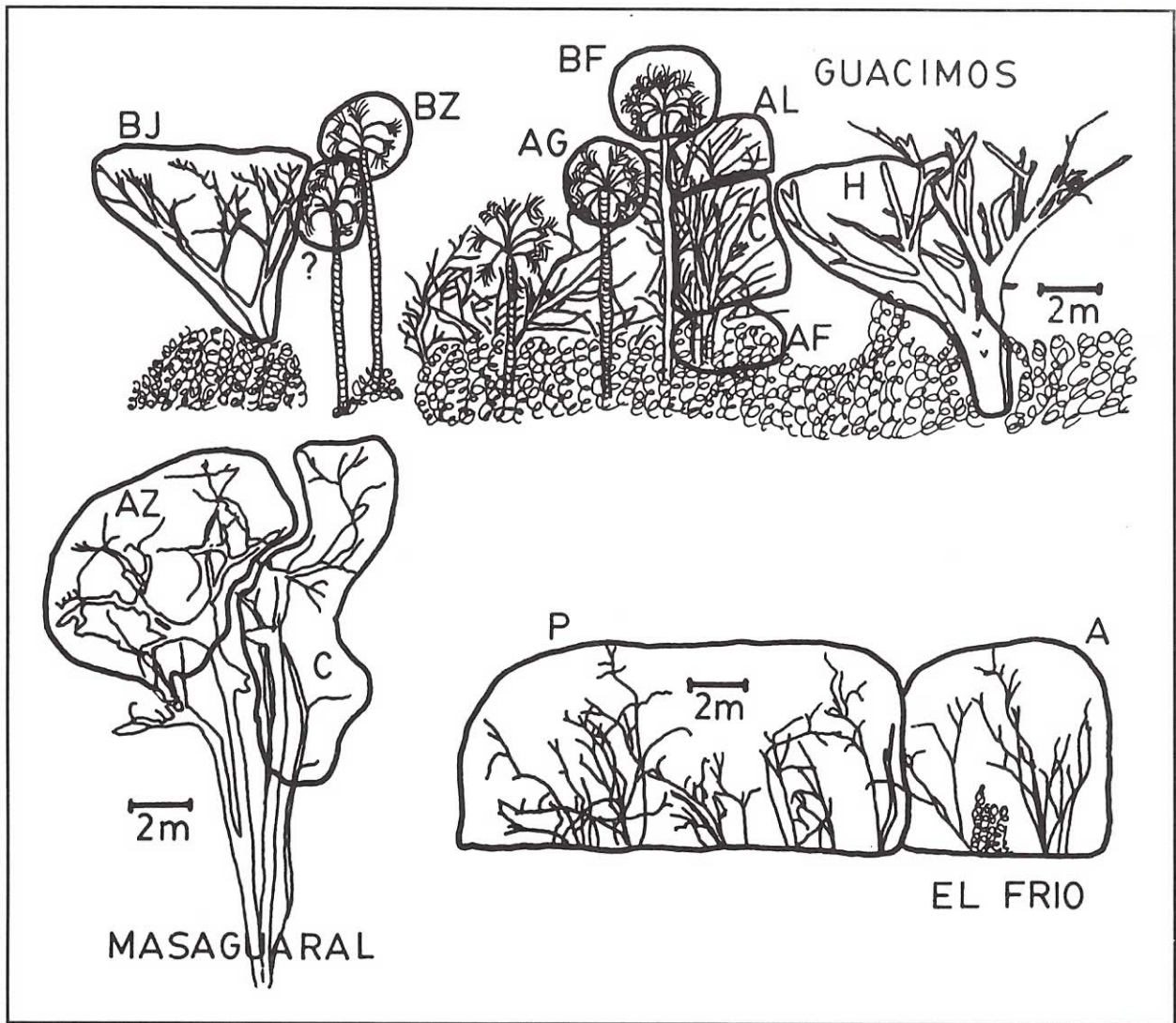
Females were more numerous than males (average female/male sex ratios among nonmating iguanas measured at dusk: 3.4 at El Frio, 2.3 at Masaguara, 2.3 at Guacimos). Males were slightly larger than females (adequate data are available only for Guacimos during the mating season: male/female length ratio = 1.1).

### *Discussion of Nonbreeding Behavior*

Iguanas usually find plenty of edible leaves in their immediate vicinity (Rand, 1978). Moreover, an iguana's gut has room for only modest additions each day, as passage times are lengthy (average 6.9 days for this population; D. Brust, pers. comm.). Dugan's (1982b) estimate of daily foraging time of 20 min is consistent with the 30 min maximum that I observed. Unlike the large insectivorous lizards in the study areas (e.g., Tupinambis), iguanas readily interrupted their foraging in response to distant approaches of a potential predator (Rodda and Burghardt, 1985). Finding enough to eat does not appear to be a major problem for iguanas, but leaves have relatively little extractable food energy. Thus, it is not surprising that these lizards conserve energy (Dugan and Wiewandt, 1982). Most of their day is devoted to basking. Nonbreeding iguanas bask for about 4 hours in their sleeping tree in the morning and another 2-3 hours in the afternoon. They are immobile for most of the time that they are out of their sleeping tree. Stamps (1983) characterized the Iguanidae as being "relatively phlegmatic"; perhaps they are better thought of as being quietly vigilant.

Nonmating iguanas are relatively tolerant of the proximity of other iguanas. Typically, agonistic interactions are low in intensity, involve few displays, and occur only as they ascend the sleeping trees. They exhibited no defense of territories or other exclusive use areas. Their mild protests to being passed by another iguana along a branch did not extend to defense of a specific perch. Once an iguana had passed another, the two resumed a relaxed posture and showed no tendency to challenge each other. Suitable perches did not seem to be limiting.

Two lines of evidence suggest that headbobs often were given for a purpose other than winning



**Figure 1.** The study sites showing modal territory boundaries (males identified by letter codes). Each of the trees illustrated was approximately cylindrical and most projected out over the adjacent shoreline during the late dry and early wet seasons. During the late wet and early dry (mating) seasons the water rose and submerged the tree bases. The tree, including the territory of male H at Guacimos, was monitored continuously during the copulation season.

the interaction immediately at hand: (1) the overall lack of association between displays and success in interactions, and (2) the frequent display of head-bobs after the iguanas had separated following an interaction (see "Female Dominance Relations").

The iguanas' tendency to sleep in a head up posture and bask in a head down posture may have a physiological basis. Clark and Gillingham (1990) argued that the head up sleeping posture adopted by two species of *Anolis* maximized nocturnal vigilance by keeping the anoles' heads toward the limb base, thereby expediting detection of climbing predators. This rationale is not directly applicable to the pattern of sleep postures in iguanas, as iguanas

on horizontal perches more often slept with their heads pointing away from the limb base.

Although nearly all iguanas slept in a horizontal or head up posture, most basked horizontally or with the head down. Head down basking might facilitate warming of the head and increase early morning motor coordination. Smaller iguanas can warm up faster than larger animals while basking, which presumably accounts for their leaving the sleeping tree sooner and returning later than the larger adults.

The density of iguanas in the Guacimos study area was higher than reported in Central America (Dugan, 1980:32-37; Van Devender, 1982).



Density is known to affect social interactions; for example, territorial animals may shift to a hierarchy at sufficiently high densities (Brattstrom, 1974; Wilson, 1975). However, density did not appear to influence the behavior of nonbreeding iguanas, as the behavior at all sites was similar.

The lower site fidelity of females compared to males is consistent with Dugan's (1982b) observation that female home ranges were larger than those of males year round. Dugan suggested that the males may be maintaining residence status in an area that will be defended during the mating season. The higher number of females present at all times of year suggests that mortality may be higher among adult males. This was the case among road-killed iguanas reported by Rodda (1990); the excess deaths of males (largely peripheral males) occurred during the mating season (see also Harris, 1982).

### **General Mating Behavior**

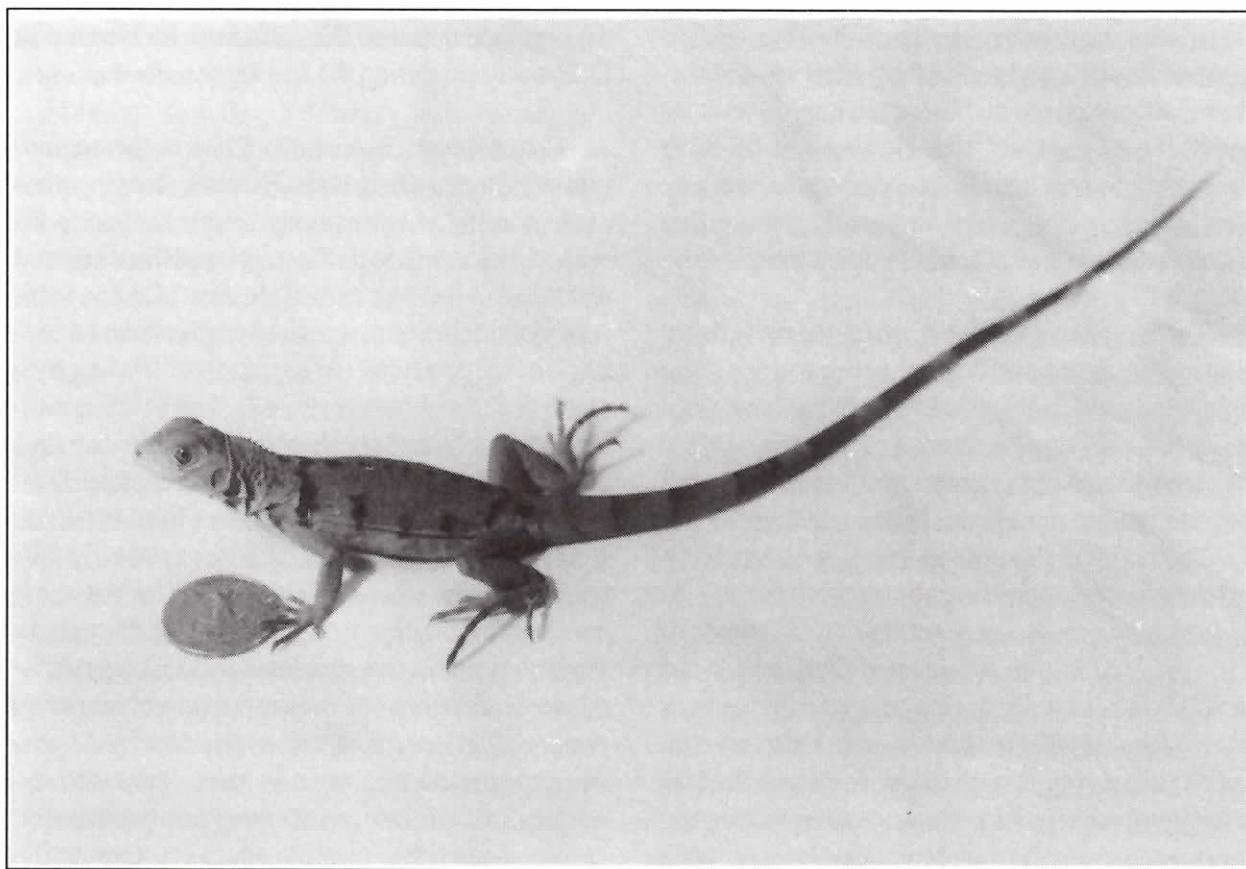
#### *Results*

**MALE HIERARCHY FORMATION.** — The first event of the mating season was the gradual emer-

gence of a male dominance hierarchy. Initially, males distorted their daily movements so as to avoid the immediate neighborhood of larger males. This was accompanied by an increase in the frequency or of headbob displays.

In these Venezuelan populations, the males did not develop a facial/mandibular reddening, as is characteristic of mating iguanas elsewhere (Dugan, 1980:31). In addition, males in the study areas did not acquire the tan, orange, or gold body color often found in Central America (Swanson, 1950; Alvarez del Toro, 1982:85; Fitch and Henderson, 1977).

**TERRITORY FORMATION.** — The year-round home ranges of the males I observed often contained several sites that eventually would become mating territories. Thus, territory formation involved both the selection of a mating territory and the establishment of defended boundaries for the chosen site. In the beginning of November, territorial defense was intermittent; a male would display for a few hours or days and then abruptly abandon an uncontested territory to try elsewhere. Often a



Two month old hatchling, *Iguana iguana*. Photography: Ron Harrod

male would defend a territory for a few hours after dawn and before dusk (when the largest number of females were present), but not at other times of day. Territories were most often abandoned when few females were present. Territories tended to be established around the highest concentrations of females ("hot spots"). Surprisingly, some males at Guacimos continued to try to establish territories until nearly the end of the copulation season. Usually, no females would enter such a late territory and all of the very late territories were abandoned after a few days of unsuccessful displaying. In one case at Guacimos, however, part of a highly successful males' territory was usurped by a newly territorial male about 1/3 of the way through the copulation season. In contrast to the unstable territorial boundaries at Guacimos, only two major changes in territory were noted at the two other sites in two years. In one case, a male at Masaguaral lost several of its foreclaws, presumably due to an injury suffered in intermale combat. As it became unable to reliably climb smooth-barked trees, it was no longer able to defend its entire territory. The abandoned part of its territory was then incorporated into the adjacent male's territory. The following year the same male, still without use of some of its foreclaws, attempted to establish a territory in another tree at the Masaguaral site. However, it failed to attract any females and it abandoned the territory after a few days. Only very minor boundary changes occurred after territory formation in both years at El Frio.

The longest male:male interactions occurred in November, as territories were being formed. One fight, qualitatively similar to those that have been described for captive iguanas (Peracca, 1891), involved 45 min of vigorous wrestling and biting of extremities, but most fights lasted less than 30 sec.

Territorial males ceased foraging once territorial defense was maintained throughout the day. At El Frio both territories contained a few leaves of *Nectandra pichurum*, a preferred food, which one male ate occasionally during long pauses between interactions. However, this male ate little and continued to lose weight noticeably. Territorial defense often involved regular patrolling of the mating territory, presumably to intercept intruding males and to court females.

As territories became established and small males were excluded, females began to aggregate in the territories of the largest males. In the territory of male H at Guacimos, little change in female density occurred following territory establishment by the area's second largest male. The tree that became H's territory was heavily used by females prior to establishment of territories.

Small individuals of both sexes generally were excluded from preferred mating territories. As the territorial boundaries solidified, female use of the territories stabilized, with a high percentage of females returning to the same territory in which they spent the previous night. Some small males that did not display or remain in a territory during the day nonetheless often slept within another male's territory, arriving late and leaving early. The resident males did not attack or chase these small males. High numbers of females combined with the exclusion of small males during the middle of the day produced an elevated female:male territory sex ratio, which I term the operational sex ratio or OSR (cf., Emlen and Oring, 1977). The presence of small males reduced the OSR at dawn and dusk during the copulation season. Nevertheless, an increase in OSR occurred during the mating season at all sites.

**COPULATION SEASON.** — Prior to the copulation season, female iguanas left their sleeping trees each morning. As their body cavities began to fill with developing ova, they stopped feeding and remained in the tree during the day. Midday occupancy of territories coincided with the onset of copulation, but preceded the cessation of feeding by a mean of  $7.5 + 4.1$  days ( $N = 7$ ). The study territories were selected for their leaflessness and thus females moving into these territories may have been subjected to greater midday insolation (cf. Beuchat, 1988). However, females in heavily foliated territories were observed to follow the same pattern of remaining in their territories throughout the day. Females that remained in a mating territory were subjected to fewer mounting attempts by peripheral males. However, as the copulation season progressed, peripheral males increased the number of their intrusions into mating territories.

At Guacimos (1983), the first copulation attempt and first copulation occurred on 30

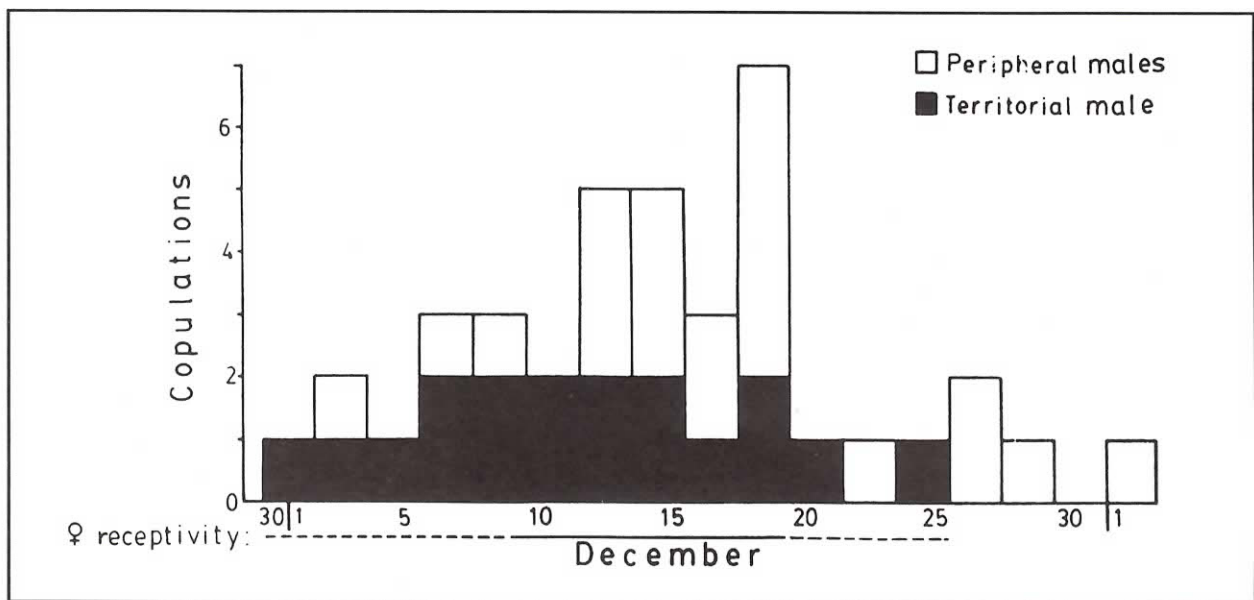
November. At Masaguaral (1982), the first observed copulation attempt was on 19 November and the first observed copulation was on 20 November. At Guacimos, the territorial male obtained most of the copulations that occurred during the first half of the copulation season (Figure 2).

Once a territory was established, the roles of mature males fell into three classes: pseudofemale, peripheral, and territorial. Pseudofemales were small adult males that behaved as females. Generally they did not display, attempt to copulate, nor did they spend their days at the periphery of another male's territory, intruding when possible. Small males regardless of social status gave very few headbobs, whereas pseudofemales were conspicuously undemonstrative even for small iguanas. I saw pseudofemale behavior in only two situations: (1) at Masaguaral in 1982, a pseudofemale habitually occupied a tiny side branch off the trunk of the largest tree (Figure 1), at a place just below the major branching of the crown, where the territorial male normally perched; and (2) in several territories, pseudofemales entered the territory just before dusk and were the first to leave in the morning. On several occasions large or medium males attempted to mount such pseudofemales at dusk, but the pseudofemales fled. I believe that

pseudofemales often were mistaken for females by other iguanas of both sexes.

The distinctive feature of peripheral males was their characteristic location (at the edge of a territory) and their repeated attempts to force copulations, either by a transient foray into a territory or by intercepting a female outside a territory. For the first half of the copulation season, females would occasionally leave a territory to feed, at which time they would be attacked by peripheral males. At least three times at Guacimos, a female who left her territory had to struggle to evade the three peripheral males that had simultaneously mounted her. Peripheral males displayed more often than the average small male (peripheral or pseudofemale), but not as often as an average territorial male. Many peripheral males were medium in size, but all sizes except the very largest were represented.

Territorial male behavior consisted primarily of territory patrolling, presumably in search of intruding males and receptive females. Territorial males reacted cautiously to most intruders, headbobbing and slowly approaching until near the intruder or until the intruder fled. However, territorial males seemed to recognize some individual iguanas at a distance; frequently a territorial male would move at near maximal speed toward an intruding male, which almost inevitably ran or



**FIGURE 2.** Copulation activity by date for Guacimos. The dashed line below the abscissa indicates that a single unusual female was receptive on these dates (see text); the seven other resident females were receptive during the period marked by a solid line.



Extremely gravid female, *Iguana iguana*, in captivity. Photograph: Deborah Neufeld

jumped out of the tree. In contrast, the arrival of a resident female would ordinarily evoke no more than a headbob. In 2 of 5 territories, the dominant male circled the periphery of his territory on a regular basis, taking 45-90 min for a circuit. In another 2 of these 5 territories the territory lacked circumferential branches that would permit patrolling along a circuit. The intensively monitored male at Guacimos so often interrupted his circuit to repel the frequent intrusions of peripheral males that no regular circuit was apparent.

While patrolling, a territorial male would approach each of his females. The deliberate approach to females seemed to be the same as the deliberate approach given by territorial males to unfamiliar iguanas. In particular, I observed no distinctive headbob associated with courtship; the shudder bob associated with courtship described by Dugan (1982a) occurred in a wide variety of high intensity contexts. Males gave shudder bobs (= vibratory head nodding, Distel and Veazey, 1982; or low-frequency head bobbing, Müller, 1972) more often than did females, but both sexes gave them in high intensity interactions with both males and females.

Female responses to approaches ranged from no overt reaction to vigorous biting, fleeing, and headbobbing. The no-reaction option was rare and usually resulted in a copulation attempt. However, only 30 of 248 copulation attempts at Guacimos were preceded by the female responding passively to a male approach. A small but unquantified number of passive responses occurred that did not progress to a copulation attempt (usually interrupted by a simultaneous peripheral male intrusion). Nevertheless, the total number of passive responses was a tiny fraction of the 657 approaches recorded for resident females while intruding males were absent at Guacimos.

Female rejection behaviors included waving one leg while lying down, arching or lashing her tail (if approached from the rear), headbobbing, walking away, facing, running away, and biting the male, generally in the face. Interpreting the passive responses as evidence of behavioral receptivity, and the range of dates on which passively received copulation attempts occurred as the window of receptivity for the six nearly continuously observed females at Guacimos ( $n = 25$  passive responses), the six were receptive for 27, 0, 8, 1, 5, and 1 days.

The female that was receptive for 27 days, AH, was aberrant in every measure of female reproductive performance; she accepted all males indiscriminately (both territorial and peripheral) over a span of dates 50% longer than the receptive seasons of all the other females combined. Captive iguanas are receptive for periods of about 1 week (Braunwalder, 1979; Putz, 1982). Excluding AH and including three other females that were quantifiably receptive, female receptivity was brief and relatively synchronous. Receptivity for all eight females occurred in the period from 30 November to 19 December; seven of these were receptive during only 11 days: 9-19 December. Four were receptive simultaneously on 11 December.

All of the copulations performed by H, the male in the intensively monitored territory, were observed. At the beginning (30 Nov-5 Dec) and end (20-24 Dec) of the copulation season, male H's copulations occurred on alternate days. During the middle of the copulation season (6-19 Dec, except 16 Dec), male H copulated once daily. On four of the five skipped days at the beginning and end of the season male H everted his hemipenes and exuded a white, viscous liquid. His choice of right or left hemipenis did not differ from a random sequence (Runs test:  $r = 10$ ;  $n = 7,9$ ;  $0.05 < P < 0.95$ ). Comparable data are not available for any other site or male, although it is noteworthy that on one day at El Frio male P copulated shortly after dawn and then again shortly before dusk. This was the only observed exception (out of 55 copulations observed at all sites) to the generalization that iguanas copulate no more than once per day.

The dawn and dusk copulations of male P also were anomalous in their time of occurrence. Most territorial male copulations occurred around midday copulations by territorial males were more concentrated in time ( $F = 3.90$ ;  $df = 21,18$ ;  $P = 0.002$ ) than were those of the more opportunistic intruders. The difference is also significant for copulation attempts ( $F = 2.57$ ;  $df = 202,43$ ;  $P < 0.0012$ ), indicating that the peripheral males were attempting and obtaining copulations at a wider range of times of day. This might be related to an apparent once-a-day limitation on copulations. If males stopped attempting to copulate after their first copulation of the day and if the territorial males were able to obtain

a copulation after basking every day, their copulations would be relatively concentrated at midday.

Did territorial males stop attempting to copulate after their first success of a day? I identified 12 precopulatory intervals of about 2 h that could be paired with 12 identical but postcopulatory times-of-day for dates that were only one or a few days earlier or later (dates and times were matched to control for seasonal or daily/temperature changes in ardor). For example, the number of a male's copulation attempts between 1000 h and 1200 h on a day when the male copulated at 1200 h would be compared to the number of his copulation attempts between 1000 h and 1200 h a few days later when he copulated at 1000 h. No copulation attempts occurred in the intervals after a success, whereas significantly more (mean  $0.83 \pm 0.21$ ) occurred in the intervals that were not preceded by a copulation (Wilcoxon matched-pairs signed-rank  $T = 0$ ;  $n = 61$ ;  $P = 0.025$ ). However, iguanas may be unavoidably refractory even after a failed copulation attempt. If this were so one would expect a similar reduction in copulation attempts by peripheral males. For the two peripheral males for whom adequate data exist, no evidence of a refractory period was detectable in terms of number of copulation attempts (Wilcoxon  $T = 9.5$ ;  $n = 6$ ;  $P \gg 0.05$ ), number of intrusions (Wilcoxon  $T = 17.5$ ;  $n = 8$ ;  $P \gg 0.05$ ), or latency to next copulation attempt (Mann Whitney  $U = 12$ ;  $n = 5,6$ ;  $P = 0.33$ ). Unlike the territorial males, peripheral males attempted to copulate after a successful copulation. Although no peripheral males were observed to succeed in obtaining more than one copulation per day, the peripheral males very low success rate during any copulation attempt (see following section) would render two successes on a single day improbable. Although the territorial male stopped copulation attempts after a success, there was no reduction in his locomotor activity (mean increase = 1.9 m/h) or approaches to resident females (mean increase 0.015 approaches/h). This implies that the male may have been invigorated and was surely not exhausted by copulation, and that even if approaches to females are equivalent to "courtship," they are not necessarily a preliminary to copulation. Close approaches to females may be an unavoidable correlate of territorial patrolling.

The average copulation of the territorial male at Guacimos lasted 9.0 min, 2 min longer than that of the average peripheral male copulation ( $t = 1.72$ ;  $df = 31$ ;  $P = 0.047$ ). This difference was significant even if comparing only the uninterrupted copulations of each male type ( $t = 2.37$ ;  $df = 24$ ;  $P = 0.013$ ). The durations of copulations among all iguanas in my sample did not deviate significantly from those reported by Dugan (1980:79; 1982b) ( $t = 1.32$ ;  $df = 64$ ;  $P = 0.19$ ), although my sample probably includes more peripheral male copulations, which bring the means closer together. Uninterrupted territorial male copulations at Guacimos were significantly longer than those in Dugan's sample ( $t = 3.05$ ;  $df = 37$ ;  $P = 0.0042$ ).

During copulations, both territorial and peripheral males exhibited low-amplitude spasmodic head twitches that occurred synchronously with even lower amplitude tail base movements and abdominal contractions (cf. head movements reported by Braunwalder, 1979; Putz, 1982). Twitch rates varied from 0 to 48 beats per minute (bpm), with the mean of 33 nonzero measurements on males being 21.9 (SD = 11.9). Three measured means for entire single copulations were 12.7, 20.7,

and 20.8 bpm.

My impression is that the contractions represented sperm transfer contractions. For the 12 copulations for which adequate data exist, the contractions began within a few seconds of intromission and continued for an average of 75% of the total copulation time. On three occasions white viscous fluid was visibly emanating from a hemipenis when a copulation was broken up while the male was still contracting. Cessation of pulses was a good predictor that uncoupling was imminent.

Some females changed territories during the copulation season, but most females became extremely consistent in their choice of sleeping trees. Inconsistent females generally were (1) small, (2) harassed by the larger females, and (3) inclined to leave the tree early and return late. Most consistent females remained in the tree throughout the day. I termed the latter "residents." At Guacimos 11 females were residents in the intensively monitored territory for some or all of the copulation season. The territorial male copulated with eight of these, all of whom had been residents since the beginning or almost the beginning of the mating season. Of these eight, one of the two largest



16 year old male, *Iguana iguana*, in precopulatory embrace. Photography: R. W. Ehrig

females in the territory left to become a resident in an adjacent territory during the copulation season. Her departure as a resident followed immediately after losing an encounter with the other largest female, with whom she had previously interacted amicably. She departed (as a resident) before being inseminated by the territorial male, but she returned for a brief daytime visit on the following day, copulated with the territorial male, and then left permanently (i.e., did not enter the tree again during the mating season).

Three females became residents after the beginning of the copulation season. Two of these had copulated elsewhere shortly before changing territories. One was the largest female seen at any site (of 166 total), and just before switching she had copulated with the largest male. The resident male in her new territory mounted this female five times, but each time she resisted violently and escaped. She left the territory as a resident after five days, but returned irregularly thereafter. My impression was that she moved to the intensively monitored territory and then left the territory to find a new refuge with less harassment by males. The other two late-arriving female residents were not mounted by the resident male.

Similar female behavior was seen at Masaguaral. A major difference was that five of the nine females that were residents in the clump of four study trees (two territories) at Masaguaral switched territories (but not clump) several times; one switched at least 12 times. The Masaguaral data established only a minimum number of switches for these five females, but the mean of these minima was 6.2. The female that switched at least 12 times copulated with both territorial males. In the female dominance hierarchy this female ranked third from the top (out of 14 (including all females in area)). However, high rank was not associated with switching, as the nonswitching females were ranked 1, 2, 4, and 8.

Twenty females were residents for at least part of the copulation season at Guacimos in 1983 ( $n = 11$ ) or Masaguaral in 1982 ( $n = 9$ ). Of these, seven were observed to copulate with at least two different males; seven more probably copulated with multiple males, based on the observed pattern of their territory switches; and five probably (two

definitely) were not multiply mated.

For the six females at Guacimos whose mating behavior was completely monitored, the average number of copulations per female was  $4.8 \pm 4.7$ , but this value is grossly distorted by the one aberrant female, AH, that copulated 15 times. Excluding her, the average is much lower and less variable ( $3.0 \pm 1.4$ ).

All mating behaviors dropped abruptly in vigor and frequency around 18 December 1982 at Masaguaral and 19 December 1983 at Guacimos. Displays waned, locomotion dropped, male aggression decreased noticeably, female belligerence peaked (then apparently dropped sharply a few weeks later), male territory defense became irregular, and territorial males resumed feeding. Most importantly, the frequency of copulations at Guacimos dropped sharply from nine (17-19 Dec) to one (20-22 Dec), with that one involving the aberrant female AH. Excluding AH there was only one copulation after 19 Dec, and that was a forced copulation of a cripple (broken foreleg). Four females from a nearby area were inspected for reproductive condition 15-22 December 1983. Three were on the threshold of ovulating (follicles  $> 20$  mm dia.) and the fourth had begun ovulating.

**MATING SUCCESS.** — To evaluate the relative reproductive success of males of different roles or size.; one would prefer representative observations of the entire male population. Unfortunately, it was difficult to keep small males in view. They appeared to avoid reproductively active areas and none were seen to copulate. This is especially noteworthy as copulations were conspicuous owing to (1) the prominent perches usually occupied by copulating iguanas, (2) the violent physical grappling associated with most of the observed copulations, and (3) the relatively long duration of copulations. Thus, the successful males were easily identified and these individuals could be apportioned among the size classes and roles they represented.

The best size class data are for Guacimos. I based the proportions of the various size classes on the mix found among known size animals: 48% small, 26% medium, and 26% large. No pseudofemales were observed to attempt a copulation at Guacimos, so it is possible that pseudofemale

behavior in this population served only to avoid the attacks of larger males. Of the males that slept in either the intensively monitored territory or an adjacent undefended area during the copulation season, an average of 1.0 (16%) per night was a territorial male, 2.6 (43%) were peripheral males, and 2.4 (40%) were the pseudofemales not seen to attempt mating (although of a size believed to be physiologically competent, based on dissection of 57 road-kills: Rodda, 1991).

Mating success is usually measured by the number of copulations obtained. However, because females under continuous observation copulated from 1 to 15 times, it seems reasonable to treat one female's sole copulation as being much more significant than would be one of another female's 15 copulations. Reproductive success has been apportioned using three alternative hypotheses for the form that sperm competition might take. Under the mix hypothesis all matings were counted as fertilizing  $1/n$  of each clutch, where  $n$  is the number of copulations each female received. Under the first-precedence hypothesis the first copulation was assumed to fertilize all of that female's eggs; under the last-precedence hypothesis the last fertilization before 23 December (a likely ovulation date) was assumed to fertilize all eggs. For these computa-

tions it was necessary to know all of each female's copulations. Thus, only the six females under continuous observation were used. Based on these computations it would appear that there is an enormous advantage to being a large territorial male, and the discrepancy between classes is greatest if early inseminations take precedence in obtaining fertilizations.

Qualitatively, this finding was observed in every territory, but the total success of peripheral males was higher in some territories and lower or negligible in others. The two key variables were access to the territory and the density of females. Isolated palm trees were almost impossible for a peripheral male to invade, whereas territories with multiple entry points were less defensible. Interlocking canopies, multiple trunks, and multiple territories within a tree (e.g., Guacimos, C in Figure 1) promoted the success of peripheral males. At El Frio, the territory of male P had almost unlimited entrance routes, but the low density of females and the superb visibility in the nearly leafless territory made it difficult for an invading peripheral male to escape detection.



CONTINUED IN NEXT ISSUE...

## IGUANA RESCUE GROUP UPDATE

The Iguana Rescue Group of central Florida has continued rescue, rehabilitation, and placement of iguanas including some out of state. To date over 35 iguanas have been placed.

### The Iguana Rescue Group

#### Florida (Central-North-Gulf Coast)

##### Contact

Deborah Neufeld  
P.O. Box 423332  
Kissimmee, Florida 34742

Janet and Dennis Truse (407) 846-6976  
Lori Sandlin (407) 877-3024

#### South Florida and Elsewhere

IIS (305) 872-9811

#### Tennessee

Memphis Iguana Rescue Group  
Gina Turri  
3348 Powell  
Memphis, TN 38122 (901) 323-5563





# A VISIT WITH MAO

WENDY TOWNSEND

In addition to excellent husbandry practiced at the Finca Cyclura, the keepers have a non-invasive policy regarding the animals. Iguanas that do not exhibit interest in contact with people are afforded the privacy and space they apparently prefer. Such lizards are not imposed upon or actively tamed. Given these conditions, individual iguanas may choose to be involved with human beings or not. The result is that some lizards are, or eventually become, interested in people and approach readily while others remain aloof or withdrawn. Regardless of direct involvement with people, the iguanas at the Finca are living to their potential with respect to growth, reproduction and social activity.

During my visit to Finca Cyclura, I had the pleasure of spending some time with Mao, a 30-35 year old male Rhinoceros iguana, *Cyclura cornuta*. At about 53 inches/134 cm., and 21 lbs./9.2 kg., Mao is a handsome and stately lizard whose individuality and character are immediately evident. He is “busy” with the responsibility of overseeing his 18' x 12' territory which also houses Gretta, a female *C. cornuta* and 3 green iguanas. Adjacent to Mao's territory is another that contains 4 iguanas, one of which is his son, Jomo. Mao is ever-aware of Jomo's proximity to the boundary

between territories and often “reminds” him to keep his distance.

When I entered Mao's home, he was not anxious as he noted my presence. I took a seat on a large rock near the back of the enclosure. Mao soon got around to investigating my white sneakers, presented himself for a rub on the head and back, and then climbed into my lap. When Mao angled his head to establish eye-contact, I felt I was receiving a gift of presence and communication.

Mao climbs into my lap and looks at my eyes for his own reasons which I cannot know fully. They are probably not related to hunger, defense of his home, or simple curiosity, for Mao knows about people already and clearly seeks interaction. Rather than tolerating me as a visitor, Mao extends himself, particularly with his eyes. I can assume little about his behavior, but I am moved by his look and would like to return it with something comparable. The desire for communication seems mutual.

My reaction to Mao is not entirely due to the fact that I love iguanas. I absolutely adore Goober, one of my own green iguanas of 7 years, for her moody, independent nature among other things. Familiarity, intelligence, and an absence of fear are usually present in her eyes. However, she neither

seeks nor extends anything that I am aware of with her look.


Then again, Goober is only 7 and less experienced than Mao, who is older and, dare I anthropomorphize, wiser!



# NEWS OF THE SOCIETY

## IIS Initiates Bahamian Study

The International Iguana Society has initiated surveys to determine the status of several species of Bahamian iguanas. A long term study of a small population of *Cyclura rileyii nuchalis* was begun by Dr. Richard Montanucci, Robert W. Ehrig, and Richard Moyroud on 12 May 1993. Fifty iguanas were captured, measured, weighed, marked, and released on a small Bahamian island. The vegetative communities were inventoried on this cay and other islands that currently harbor Bahamian iguana populations. A second research team is attempting to update the status of the Exuma Island Iguana, *Cyclura cyclura figginsi*. The project is continuing through July.

The project has already yielded new information on the Bahamian iguanas. Two young male *Cyclura rileyii* were observed in bipedal jousting matches. The animals circled each other on hind legs in an open mouthed, territorial display with tails extended horizontally. This behavior is previously unknown in iguanas and is probably not physically possible for a larger species. All work was performed under permit from the Department of Agriculture of the Bahamas and with the cooperation of the Bahamas National Trust. A full report of this project will appear in the next issue of *Iguana Times*. 



Female, *Cyclura rileyii nuchalis*, in habitat. Photograph: R. W. Ehrig



Males, *Cyclura rileyi nuchalis*. Photography: Ron Harrod

## **ALBERT SCHWARTZ (1923 – 1992)**

ROBERT W. HENDERSON

SECTION OF VERTEBRATE ZOOLOGY, MILWAUKEE PUBLIC MUSEUM  
MILWAUKEE, WISCONSIN 53233 USA

On October 18, 1992, Albert Schwartz died quietly in a hospital in Miami as result of injuries sustained in a fall at his home on the night of 8 October. With the passing of Al Schwartz, an era of adventure and discovery in the West Indies came to an end. More than any single person (including Gundlach, Poey, Barbour, or Bond), Al's name has become associated with West Indian zoology. For nearly 40 years he devoted his life to discovering, documenting, and describing the butterflies, frogs, reptiles, birds, and mammals of the islands he cherished.

Schwartz was born on 13 September 1923 in Cincinnati, Ohio. He attended private schools in Cincinnati and, by the time he was in graduate school, both of his parents had passed away. He received his B.S. (Psychology) in 1944 from the University of Cincinnati, his M.S. (Zoology) in 1946 from the University of Miami, and his Ph.D. in 1952 from the University of Michigan (dissertation topic: "Mammals of southern Florida and the upper Florida keys"). Considering the topics he chose for his M.S. and Ph.D. degrees, the fact that he made his most significant contributions in the study of butterflies, amphibians, and reptiles is all the more amazing.

Most of his professional career was spent teaching at Miami-Dade Community College (1967-1988). He was not allocated time for research at Miami-Dade, and his free time was jealously guarded. Al was a life-long bachelor who avoided having distractions inflicted upon him by others. Unexpected visitors to his home were not welcome, especially in his later years when getting around his house was difficult due to chronic arthritis. On the other hand, he enjoyed social interactions on his terms: one-on-one or small groups, and usually at his home. On the occasions that my wife, Rose, and I visited him he was warm, hospitable, and physically affectionate (especially with Rose). He held court in his study, offered us coke or beer, and then wanted details of our field work. He lived a lifestyle that, I am sure, was beyond the comprehension of most, but it was the style he chose and I am certain that he had few regrets about his choices. I once asked him if he ever felt lonely, and he replied, "I am often alone, but I never feel lonely."

Schwartz frequently collaborated with other biologists, most notably Richard Thomas (University of Puerto Rico-Rio Piedras) and Orlando Garrido of Cuba. I found him to be an ideal collaborator and we worked over the telephone and by mail. No major decisions were made without discussion; he welcomed constructive criticism (and offered it whether asked or not), and when he told me something would be in the mail on a particular day, I knew it would be. While working on a large project, we spoke on the telephone nearly every day, and, perhaps more than anything, I miss being able to call Al to share a discovery or to ask his advice regarding some herpetological problem.

Al was devoted to studying the fauna of the West Indies. Cuba was the site of Al's initiation to West Indian field work in 1954, and that island remained his favorite. When Cuba became inaccessible, he quickly turned his attention to Hispaniola and the rest of the West Indies. He made noteworthy contributions to the biology of all vertebrate groups save fishes.

Al published his first paper on West Indian amphibians and reptiles in 1956. He never looked back. Al was a describer and his output was prodigious; for the West Indies alone he named

three bats, nearly two dozen new butterflies, 83 species of amphibians and reptiles (41 frogs, 37 lizards, and 5 snakes) and about 279 subspecies of amphibians and reptiles (24 frogs, 223 lizards, and 32 snakes).

One of the great ironies of Al's life, was that after he retired from Miami-Dade (1988), he had ample time to devote to field work, but his arthritic knees prevented him from doing so.

Within two years he became virtually housebound. I never got the impression that he felt sorry for himself, and the last years of his life were his most productive: *Amphibians and Reptiles of the West Indies: Descriptions, Distributions, and Natural History* (1991; 720 pp.).

Al once submitted a proposal to NSF indicating that he would do a herpetological survey of the entire West Indies, making collections, describing new taxa, and addressing taxonomic problems for virtually all genera of West Indian amphibians and reptiles. One reviewer deemed the proposal preposterous in its scale and it was rejected by NSF. As anyone familiar with West Indian herpetology will attest, preposterous as it may have been, Al did do it. All zoologists working in the West Indies, today and far into the future, owe him a debt of gratitude. Al's 230 papers (totaling about 5,100 published pages) comprise a legacy of thorough, descriptive research that will remain significant and an inspiration for decades to come.



*Editor's Note:*

I never had the pleasure of meeting Al Schwartz in person, although I was fortunate to have had a number of long telephone conversations with him. He was always friendly and cordial, generous with his time, and thoughtful in his answers to my multitude of questions. Early in our first conversation Dr. Schwartz stopped me from formally addressing him by saying, "call me Al." Al was an amazing source of information on very obscure locales in the West Indies and he generously shared his vast knowledge with me. He seemed to have visited every island in the region, and in fact the only West Indian island that I questioned him about that he had not been to was Navassa, which is one of the most remote places in the world. The only questions he declined to answer were of a strictly ecological nature and he would remind me, "I'm a taxonomist not an ecologist."

Although he was not optimistic about the future of the region, he was careful never to discourage my enthusiasm in any way. He was most supportive of the formation of the International Iguana Society and became one of our earliest members. His compliments on *Iguana Times* were a great encouragement to us. He reminded us that any protection we could get for iguanas anywhere would also protect the other herpetological fauna in the habitat. I tried to contact Al and was unsuccessful. I knew his south Miami home was near the north end of the destruction and I wondered how much he was affected by the storm. I was shocked to find out in early 1993 that he had died in October. I felt loss and sadness that I would no longer be able to call my friend. I would no longer be able to share my adventure or discovery with the great discoverer. Each conversation with Al Schwartz was an education, a treat, and a memorable experience. I deeply regret that our conversations will be no more.

*Robert W. Ehrig*

**International Iguana Society, Inc.**  
**Treasurer's Report**  
**May 1, 1992-March 31, 1993**

The International Iguana Society is a non-profit non-governmental conservation organization. IIS is international in scope and membership and dedicated to the preservation of the iguanas, consisting of the following genera: *Amblyrhynchus*, *Brachylophus*, *Conolophus*, *Ctenosaura*, *Cyclura*, *Dipsosaurus*, *Iguana*, and *Sauromalus*.

IIS is tax exempt under Section 501(c)3 of the IRC. Contributions are tax deductible to the extent provided by law.

<b>Bank Balance: May 1, 1992</b>	<b>\$4,272.16</b>
<b>Total period Deposits</b>	<b>9,629.11</b>
<b>Total period Debits</b>	<b>-6,455.15</b>
<b>Bank Balance: March 31, 1993</b>	<b>7,439.12</b>
<b>Deposits:</b>	
Membership Fees & Goods Sold	9,560.70
Interest Earned	59.41
<b>total deposits</b>	<b>+9,620.11</b>
<b>Debits:</b>	
<i>Conservation Assistance</i>	
1. Jamaican Iguana Conference	250.00
2. Iguana Conservation Sign	63.00
total	313.00
<i>Iguana Times</i>	
1. Printing	1,671.07
2. Postage	1,332.41
3. Envelopes	140.07
total	3,143.55
<i>Office Expenses</i>	
1. Computer, Printer, Table	1,563.22
2. Telephone	248.38
3. Computer Software	84.14
total	1,895.60
<i>Cost of Goods for Sale</i>	
1. T-Shirts	508.00
2. Reference Books	256.59
3. Photo-Magnets	7.50
total	772.09
Incorporation Fee: 1992	61.25
Misc. Expenses	272.72
<b>total debits</b>	<b>\$-6,458.21</b>

# IGUANA NEWSBRIEFS

## ALLAN'S CAYS ADVENTURE

I.I.S. member **Geoff Smith** and **Lynne Yamaguchi** got more than they bargained for on a recent iguana census in the Allan's Cays in the northern Exuma islands in the Bahamas. Both Geoff and Lynne are former students of Dr. John B. Iverson and were in the Bahamas to conduct the 1993 census in his place. The Allan's Cay Iguana, *Cyclura cychlura inornata* have been studied by John since 1980 (see *I.T.*, vol. 1, no. 5). Working aboard the sailboat, the *Good Fortune*, they happened to be in the islands during "the mother of all storms to hit the East coast." One minute they were casually eating breakfast and the next battling a downpour and 50 knot winds. Tides were several feet above normal. Four boats were blown aground on the beach on Leaf Cay. One boat sideswiped the *Good Fortune* on it's way to the beach. In spite of all the excitement, 120 iguanas were captured and measured, down from 272 in 1992. Studying iguanas never was so exciting.

## OH-No!

Apparently two **albino Green iguanas** have been hatched on a Columbian iguana farm. Bids are

being accepted for the purchase of the animals. More to come...

## UH-OH!

I.I.S. member **Terry Gentry's** mother-in-law became noticeably quiet when **Deborah Neufeld** phoned to let Terry know that she had his Cuban baby. She was quite relieved to find out that Deborah was referring to an iguana.

The I.I.S. will have a booth at the **Annual National Reptile Breeders Expo** in Orlando, Florida. The expo will be on Friday, Saturday, and Sunday August 13, 14, and 15th at the Twin Towers Hotel.

**Central Florida Zoo** hosted the **Southeast Regional Conference of AAZPA** (American Association of Zoological Parks and Aquariums) on 23 March 1993. Speaking at the Lizard Workshops were **Walter Auffenburg**, **Jose Ottenwalder**, and **I.I.S. President Ehrig**. Central Florida Zoo is a captive site for the Grand Cayman Blue Iguana, *Cyclura nubila lewisi*, and has much potential as a captive breeding facility for lizards.

## Statement of Purpose

**The International Iguana Society, Inc.** is a non-profit, international organization dedicated to the preservation of the biological diversity of iguanas through habitat preservation, active conservation, research, captive breeding and the dissemination of information.

**The Iguana Times**, the newsletter of the society, is distributed quarterly to members and member organizations. Additional copies are available at a cost of \$4.50 including postage. Annual dues for The International Iguana Society are \$25.00 for individuals and \$30.00 for organizations which receive double copies of the newsletter.

### Write to:

The International Iguana Society, Inc.  
Route 3, Box 328  
Big Pine Key, FL 33043



## Solicitations

Members of the I.I.S. are encouraged to contribute articles for publication in the *Iguana Times*, following a format like that shown in the most recent issue of the newsletter. Articles can deal with any aspect of iguana biology, ecology, behavior, husbandry, systematics, etc. Manuscripts must be typed, DOUBLE-SPACED, with wide margins, on 8 1/2" x 11" paper. Include your address and telephone number on the manuscript. Members are also welcome to submit letters to the Editor for publication in future issues of the newsletter. Authors of one page or more of print are entitled to three copies of the issue in which their article appears.

*The Editors*

## I.I.S. Bookstore

As a service to our members, a limited number of publications will be distributed through the I.I.S. Bookstore. We believe this will become a valuable source of information. The following publications are now available:

- 1) **The Green Iguana Manual**, by *Philippe de Vosjoli*. 1992. **\$7.00** (including postage); **\$8.75** (non-members)
- 2) **Guide to the Identification of the Amphibians and Reptiles of the West Indies (Exclusive of Hispaniola)**, by *Albert Schwartz and Robert Henderson*. 1985. **\$19.00** (including postage); **\$27.00** (non-members)

**Write to:** I.I.S. Bookstore  
316 W. Mission Ave., 117  
Escondido, CA 92025

## I.I.S. 1993 Board of Directors (acting)

**Robert W. Ehrig**  
*President*  
Big Pine Key, FL

**David W. Blair**  
*Vice President*  
Escondido, CA

**David Ehrlich, DVM**  
*Treasurer*  
Grassy Key, FL

**Richard R. Montanucci, Ph.D.**  
Clemson University  
Clemson, SC

**John B. Iverson, Ph.D.**  
Earlham College  
Richmond, IN

**Michael Ripca**  
Leaping Lizards Graphic Design  
Drexel Hill, PA

**Thomas A. Wiewandt, Ph.D.**  
Wild Horizons  
Tuscon, AZ

## I.I.S. 1993 Advisory Board (acting)

**Gordon M. Burghardt, Ph.D.**  
University of Tennessee  
Knoxville, TN

**Howard E. Lawler**  
Arizona Sonora Desert Museum  
Tuscon, AZ

**C. Richard Tracy, Ph.D.**  
Colorado State University  
Fort Collins, CO

**Ross Burnaman**  
*Secretary*  
Tallahassee, FL

**Julian Duval**  
Indianapolis Zoo  
Indianapolis, IN

## Iguana Times Staff

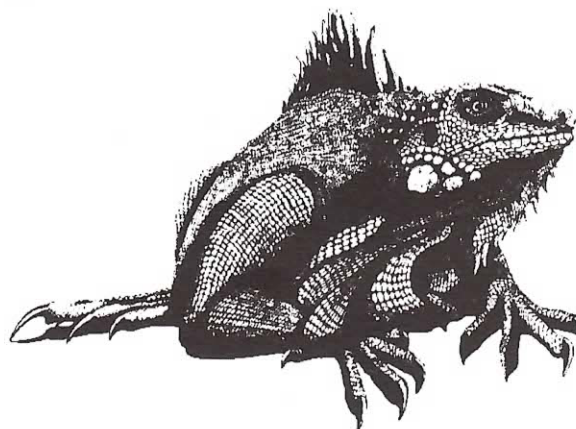
**Richard R. Montanucci, Ph.D.**  
*Editor in Chief*  
Clemson, SC

**Robert W. Ehrig**  
*Managing Editor*  
Big Pine Key, FL

**Gordon Rodda**  
*Feature Writer*  
Ft. Collins, CO

**Michael and Janet Ripca**  
*Production Coordinators and Associate Editors*  
Leaping Lizards Graphic Design  
Drexel Hill, PA

**Marcie Ehrig**  
*Administrative Assistant*  
Big Pine Key, FL



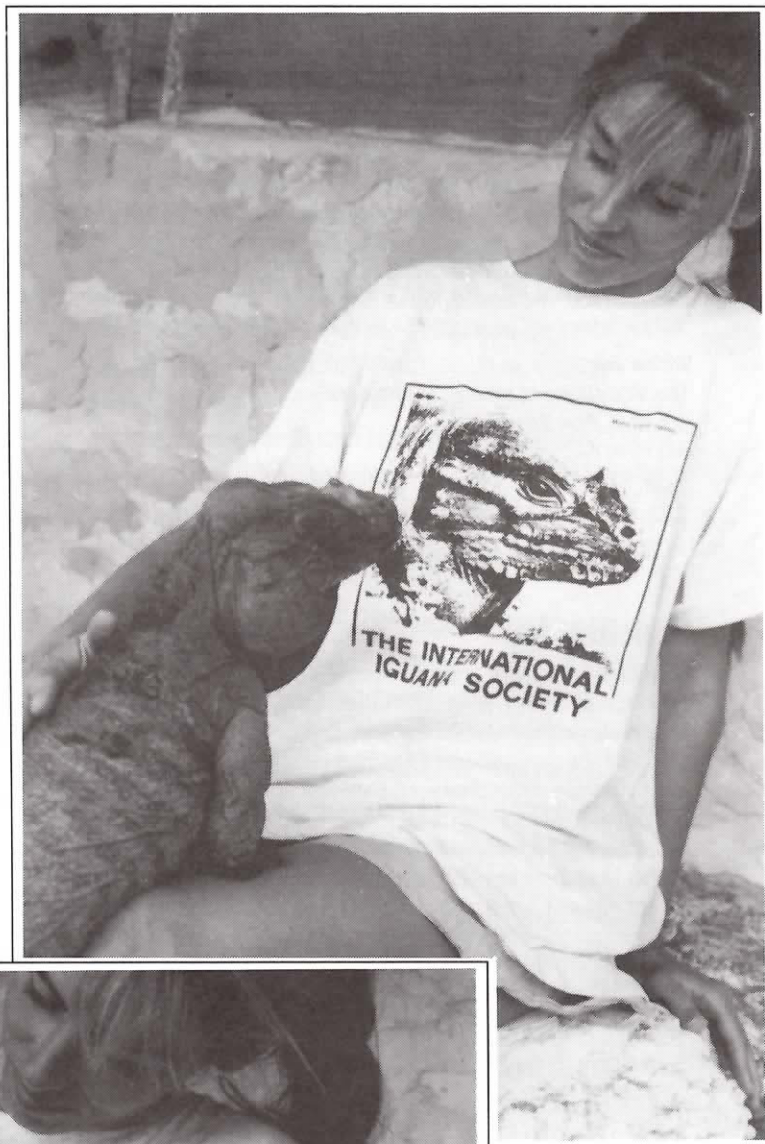
# ANNOUNCING

## THE FIRST OFFICIAL INTERNATIONAL IGUANA SOCIETY T-SHIRT!

**ONLY \$12**

plus \$2 for postage & handling  
(\$1 P&H for each additional shirt)

Sizes available in Small, Medium,  
Large, and X-Large.



I.I.S. member Wendy  
Townsend and Mao.  
Photographs: R.W. Ehrig



**Send check or  
money order to:**

International  
Iguana Society, Inc.  
Route 3, Box 328  
Big Pine Key, FL  
33043