

Fig. 1

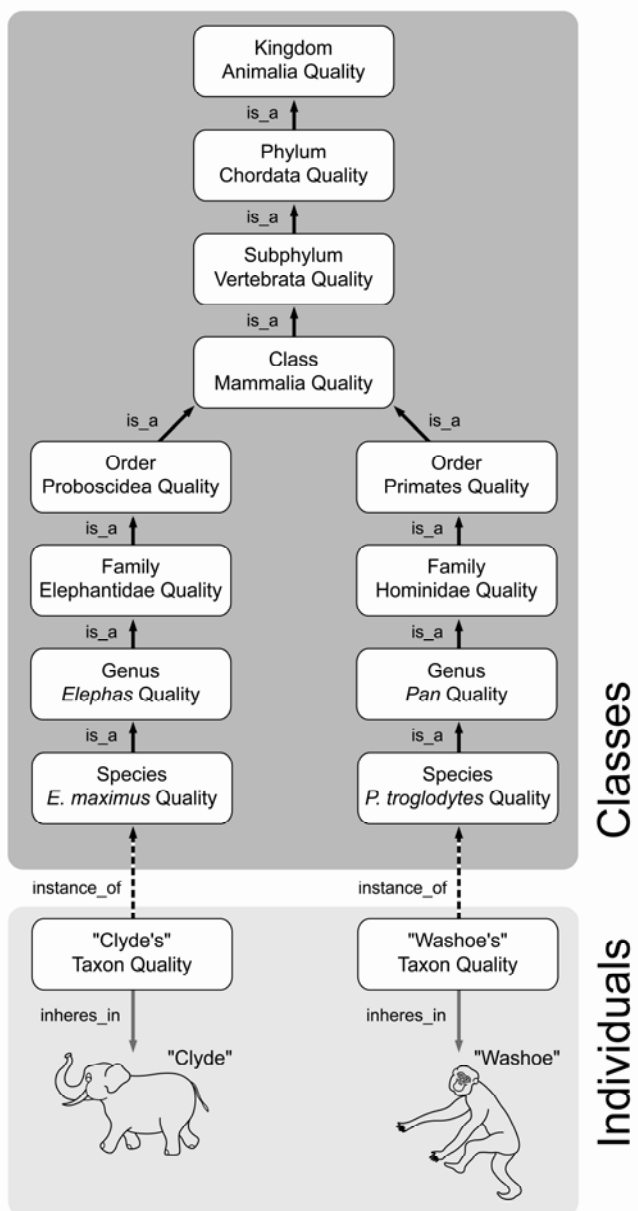
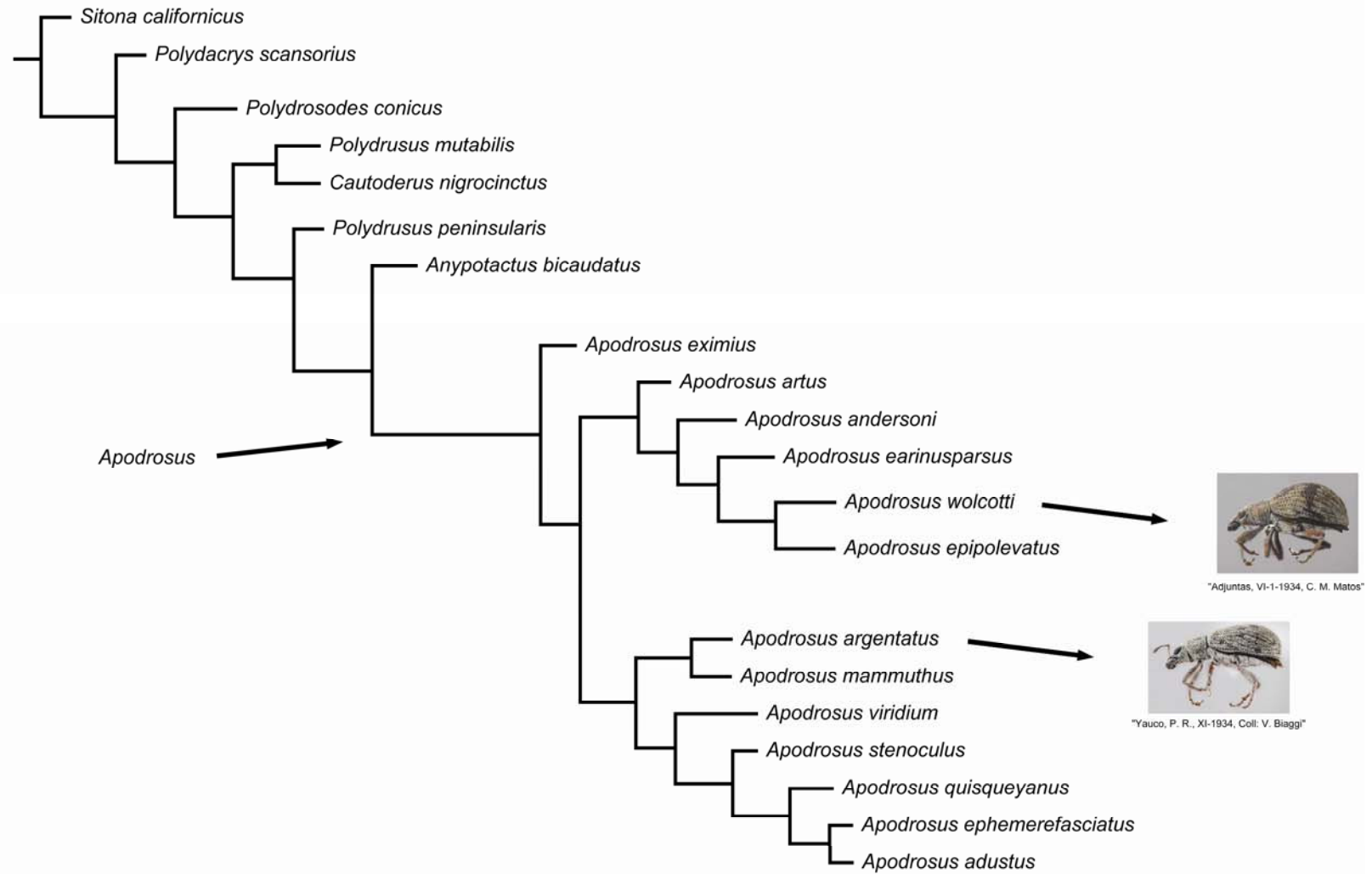


Fig. 2





# Fig. 4

## *Chromis circumaurea*, new species

urn:lsid:zoobank.org:act:8ADC4817-8F1C-4C88-8B8A-5372A84CAEC9

Gold-rim Chromis

(Figs. 3a–3c, Table 4; Morphbank<sup>105</sup>; GenBank<sup>106</sup>; Barcode<sup>107</sup>)

# A

**Holotype.** BPBM 40836<sup>108</sup> (98.2 mm SL), Caroline Islands; Yap, S end; “Magic Kingdom” (9°26'3.41"N, 138°2'5.96"E); among boulders on sloping shelf above deep drop-off, 98–100 m, hand net, R.L. Pyle and B.D. Greene, 20 April 2007 [PCMB 3080<sup>109</sup>].

**Paratypes.** BMNH 2007.10.31.3<sup>110</sup> (102.4 mm SL) [PCMB 3081<sup>111</sup>]. CAS 225757<sup>112</sup> (97.6 mm SL) [PCMB 3078<sup>113</sup>]. MNHN 2007-1924<sup>114</sup> (92.5 mm SL) [PCMB 3076<sup>115</sup>]. USNM 391138<sup>116</sup> (94.2 mm SL) [PCMB 3077<sup>117</sup>]. WAM P.32900-001<sup>118</sup> (96.6 mm SL) [PCMB 3079<sup>119</sup>]. All with same data as holotype.

**Diagnosis.** Dorsal rays XIV,12–13 (usually 13); anal rays II, 13–14 (usually 13); pectoral rays 18–19; spiniform caudal rays 3; tubed lateral-line scales 16–17; gill rakers 6–7+20–21 (total 26–27); body depth 1.68–1.86 in SL; color when fresh mahogany brown with bright yellow distally on spinous portion of dorsal fin; soft portion of dorsal fin, caudal fin, and anal fin bright yellow.

**Description.** Dorsal rays XIV,13 (12 in one paratype); anal rays II,13 (14 in one paratype); all dorsal and anal rays branched, the last to base in some specimens; pectoral rays 19 (18–19), the upper 2 and lowermost unbranched; pelvic rays I,5; principal caudal rays 8+7=15; upper and lower procurrent caudal rays 5, the anterior 3 spiniform, the posterior 2 segmented and unbranched; tubed lateral-line scales 16|17 (16–17); posterior midlateral scales with a pore or deep pit 8 (5–8); scales above dorsal fin to origin of dorsal fin 3.5 (3–3.5); scales below lateral line to origin of anal fin 10 (9–10.5); gill rakers 6+21=27 (6–7+20–21= 26–27); surpaneu-ral (predorsal) bones 3; vertebrae 12+13.

105. <http://www.morphbank.net/Show/?id=197038>

106. <http://www.ncbi.nlm.nih.gov/sites/entrez?term=Chromis%20circumaurea&cmd=Search&db=nucleotide>

107. <http://www.barcodinglife.org/views/taxbrowser.php?taxon=Chromis+circumaurea>

108. <http://zoobank.org/urn:lsid:zoobank.org:specimen:AC204B49-93B7-4BEE-890B-7BF07C1EF592>

109. <http://nsdb.bishopmuseum.org/urn:lsid:bishopmuseum.org:bioobject:F8DCA388-8031-4856-ACB0-CE7D1149FCC1>

110. <http://zoobank.org/urn:lsid:zoobank.org:specimen:03C05B9B-816B-4904-AF54-AF55FF33CA83>

# B