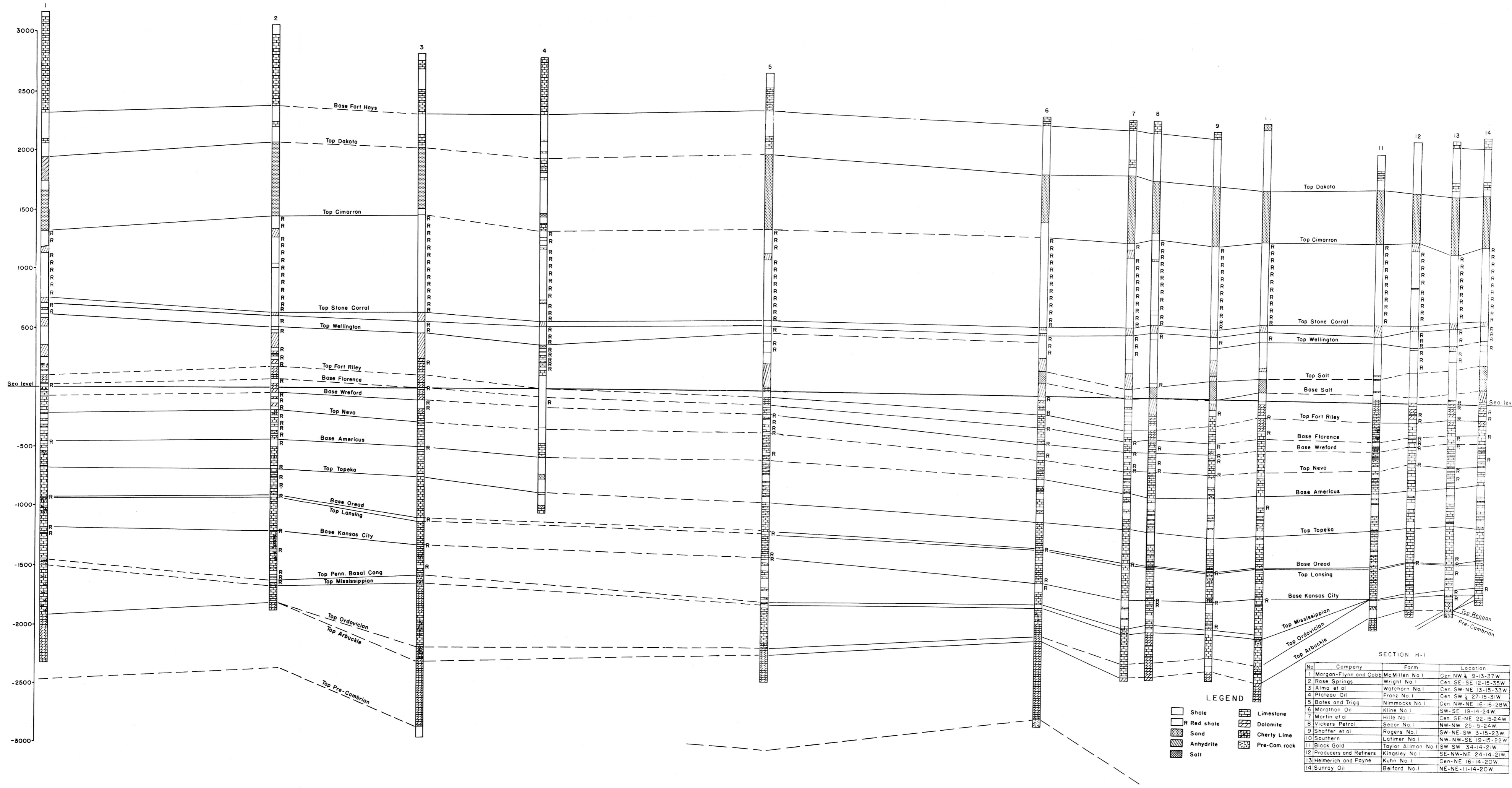


EAST-WEST SECTION ACROSS LOGAN, GOVE,
AND TREGO COUNTIES
PLATE III



SECTION H-1

No.	Company	Farm	Location
1	Morgan-Flynn and Cobb	McMillen No. 1	Cent. NW ¼ 9-13-37W
2	Rose Springs	Wright No. 1	Cent. SE-SE 12-15-35W
3	Alma et al.	Watchorn No. 1	Cent. SW-NE 13-15-33W
4	Plateau Oil	Franz No. 1	Cent. SW ¼ 27-15-31W
5	Bates and Trigg	Nimmocks No. 1	Cent. NW-NE 16-16-28W
6	Marathon Oil	Kline No. 1	SW-SE 19-14-24W
7	Martin et al.	Hille No. 1	Cent. SE-NE 22-15-24W
8	Vickers Petrol.	Secor No. 1	NW-NW 25-15-24W
9	Shaffer et al.	Rogers No. 1	SW-NE-SW 3-15-23W
10	Southern	Latimer No. 1	NW-NW-SE 19-15-22W
11	Black Gold	Taylor Ailman No. 1	SW SW 34-14-21W
12	Producers and Refiners	Kingsley No. 1	SE-NW-NE 24-14-21W
13	Heimerich and Payne	Kuhn No. 1	Cent-NE 16-14-20W
14	Sunroy Oil	Belford No. 1	NE-NE-11-14-20W