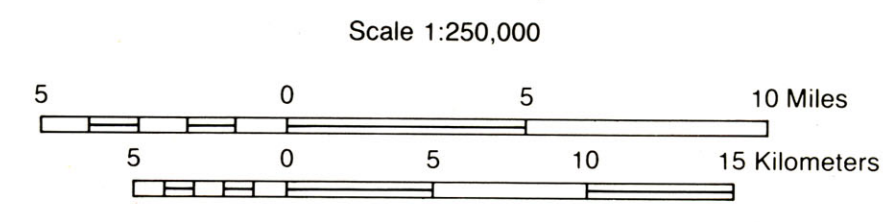
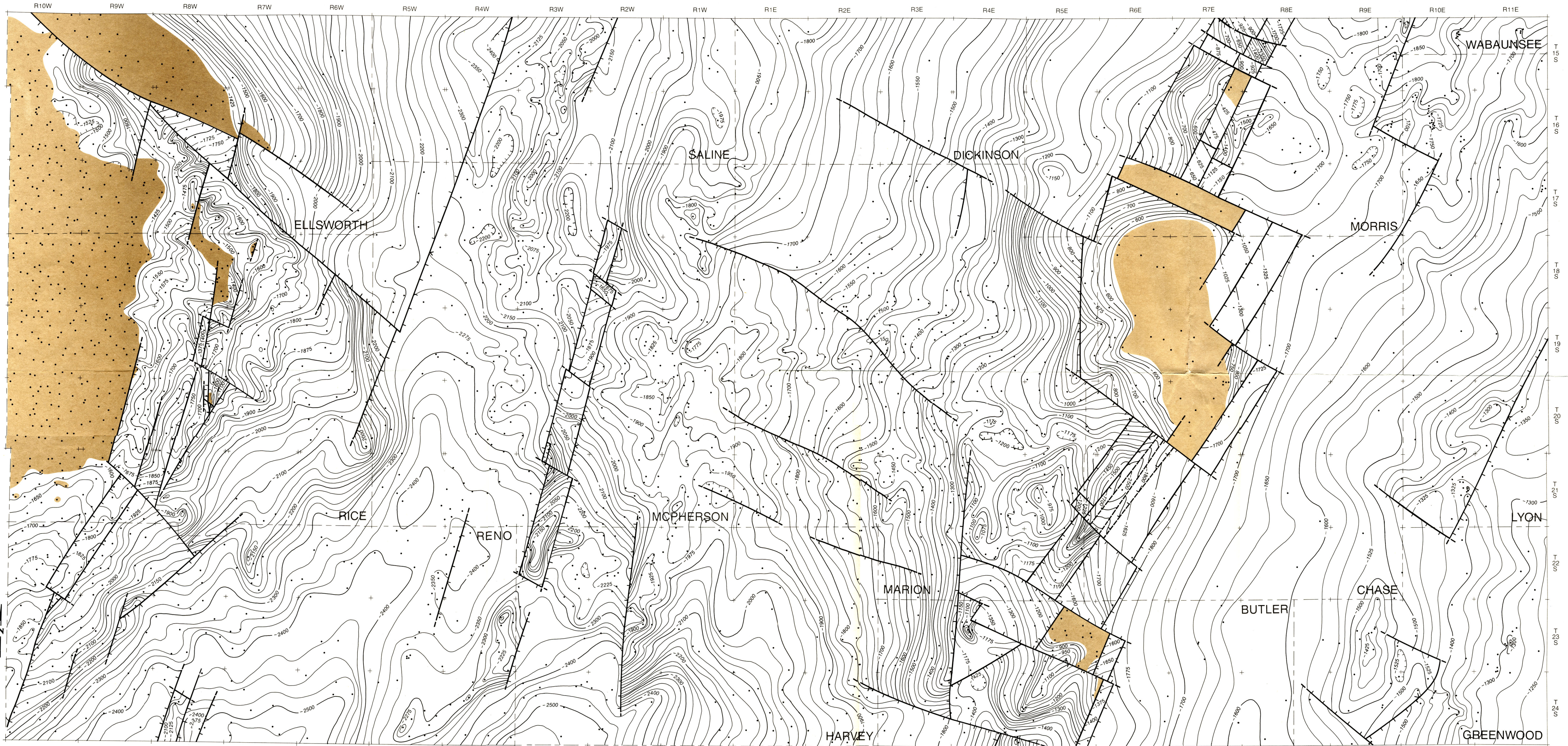


# Subsurface structural maps over the Central North American rift system (CNARS), central Kansas, with discussion

## Structural contour map on top of Viola Limestone

by Pieter Berendsen and Kevin P. Blair  
1986



• Well location

Rock unit not present

Faults  
Dashed where approximately located  
Hachures on downthrown side  
"V" indicates hinge point of scissors fault

Contour interval 25 feet  
Datum is mean sea level

Scribed by Jennifer Sims.

The Kansas Geological Survey (KGS) compiled this map according to specific cartographic standards, using what is thought to be the most reliable information available. The KGS does not guarantee freedom from errors or inaccuracies and disclaims any legal responsibility or liability for interpretations made from the map, or decisions based thereon.