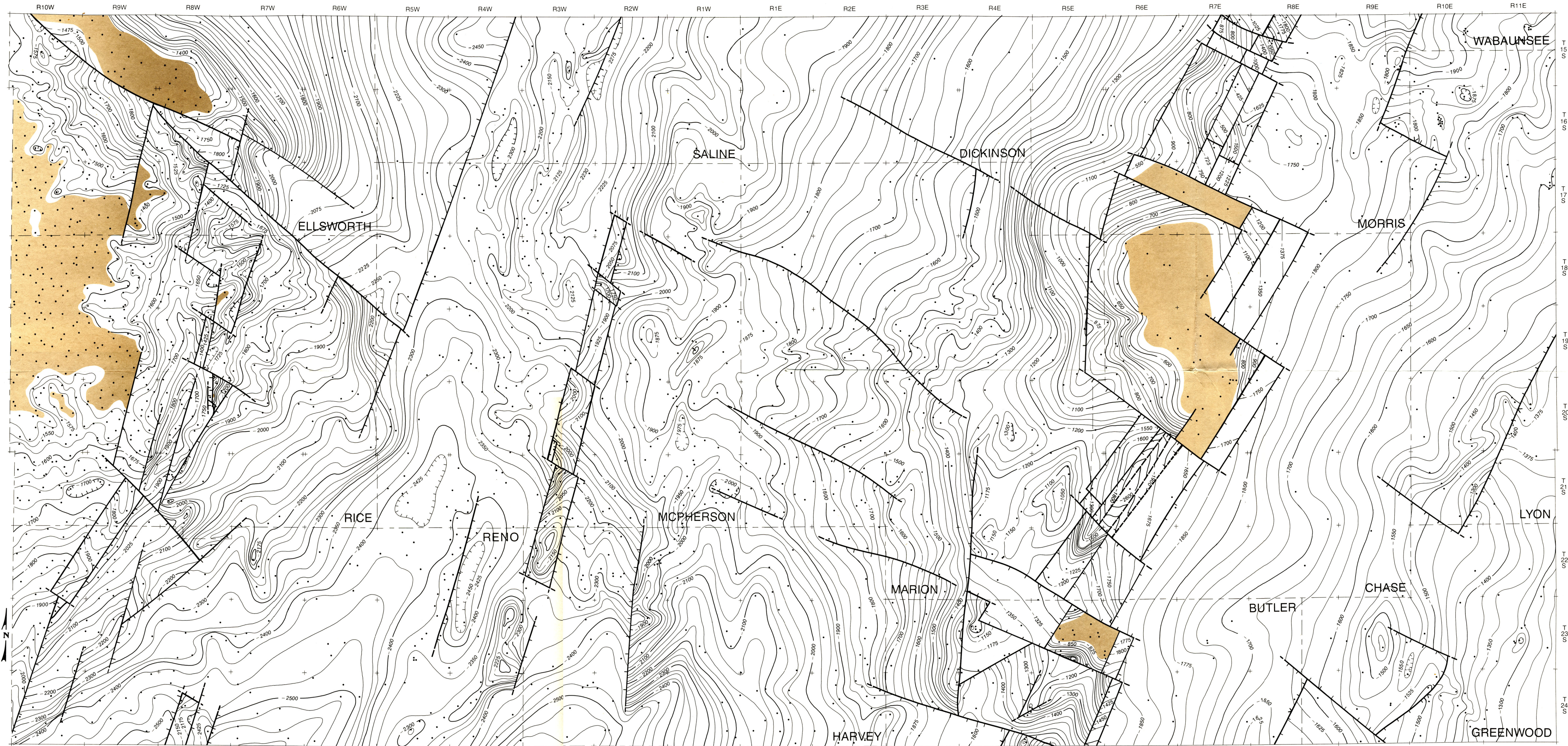


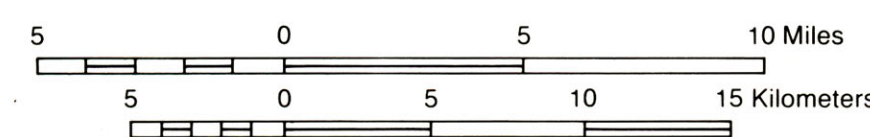
Subsurface structural maps over the Central North American rift system (CNARS), central Kansas, with discussion

Structural contour map on top of Simpson Group

by Pieter Berendsen and Kevin P. Blair
1986



Scale 1:250,000



• Well location

■ Rock unit not present

— Faults
Dashed where approximately located
Hachures on downthrown side
"V" indicates hinge point of scissors fault

Contour interval 25 feet
Datum is mean sea level

Scribed by Jennifer Sims.

The Kansas Geological Survey (KGS) compiled this map according to specific cartographic standards, using what is thought to be the most reliable information available. The KGS does not guarantee freedom from errors or inaccuracies and disclaims any legal responsibility or liability for interpretations made from the map, or decisions based thereon.