

Novitates Paleoentomologicae



No. 12, pp. 1–14

28 August 2015

The wasp genus *Clystopsenella* in Early Miocene amber from the Dominican Republic (Hymenoptera: Scolebythidae)

Michael S. Engel^{1,2}

Abstract. A new species of scolebythine wasp (Chrysoidea: Scolebythidae) is described and figured from a female beautifully preserved in Early Miocene amber from the Dominican Republic. The specimen is the first fossil record of the extant genus *Clystopsenella* Kieffer, and is quite similar to the extant *Clystopsenella longiventris* Kieffer, a species that occurs widely from Brazil to Belize. *Clystopsenella mirabilis* Engel, new species, is distinguished from *C. longiventris* on the basis of size; head, pronotal, and pterostigmal shape; and putative color differences. The living and fossil diversity of the family is summarized and evolutionary patterns within the clade are discussed.

INTRODUCTION

The wasp family Scolebythidae is one of the smaller and lesser-understood lineages of the Chrysoidea. The six living species are scattered across the globe, with two species in the New World tropics (Kieffer, 1911; Day, 1977; Gauld, 1995; Azevedo, 1999; Fernandez *et al.*, 2002; Cambra & Azevedo, 2003; Engel, 2005), two species in the Afrotropical region (Evans, 1963; Nagy, 1975; Day, 1977; Evans *et al.*, 1979), and a further two in southern Asia and Melanesia (Beaver, 2002; Azevedo *et al.*, 2011). One of the African species has also been discovered in Australia, although this is suspected to be an inadvertent introduction (Naumann, 1990). To this day there remains but a single study of the biology of any scolebythid (Melo, 2000), although various anecdotal

¹ Division of Entomology, Natural History Museum, and Department of Ecology & Evolutionary Biology, 1501 Crestline Drive – Suite 140, University of Kansas, Lawrence, Kansas 66045-4415, USA (msengel@ku.edu).

² Division of Invertebrate Zoology, American Museum of Natural History, Central Park West at 79th Street, New York, New York 10024-5192, USA.

doi: <http://dx.doi.org/10.17161/np.v0i12.4958>

evidence regarding possible host associations or behaviors have been published (e.g., Day, 1977; Evans *et al.*, 1979; Brothers, 1981). Melo (2000) reported that *Pristapenesia stricta* (Azevedo) developed gregariously as idiobiont parasitoids of anobiid larvae (Bostrichoidea: Anobiidae). In this species, the adult female digs her way into the beetle's tunnels and upon discovering the larva proceeds to sting it and deposit several eggs along the immobilized larva. Once the wasp's larvae eclose, they feed gregariously on the beetle until eventually spinning their pupal cocoons. During the same study, Melo (2000) was able to document sibling mating and noted that this, along with their association with wood-boring beetle hosts, likely confers upon scolybythids an ease for becoming adventive. Indeed, accidental introduction had already been suggested as a possible explanation for the widely disjunct occurrences of *Ycaploca evansi* Nagy (Naumann, 1990). *Ycaploca evansi* has been assumed to develop on larvae of Cerambycidae (Day, 1977; Brothers, 1981), while *Scoleybythus madecassus* Evans was found in presumed beetle burrows in rotting wood (Evans *et al.*, 1979).

Fossil scolybythids significantly outnumber the presently known extant species (Aguiar *et al.*, 2013; Table 1). The first fossil scolybythid, *Pristapenesia primaeva* Brues, was described as a bethylid (as the family Scolybythidae was not established until several decades later) in Middle Eocene Baltic amber (Brues, 1933). Brues (1933) did not recognize the similarity between *Pristapenesia* Brues and *Clystospesnella* Kieffer, the only two scolybythids then known and both placed in Bethylidae. It was not until three decades later that Evans (1963) realized, when describing *Scoleybythus* Evans, the distinctiveness of the group from bethylids, although he did not at that time recognize that *P. primaeva* belonged to the same lineage. Prentice *et al.* (1996) also did not realize the proper placement of *P. primaeva* when they described two fossil scolybythids from Lebanese and Dominican amber. Indeed, it was not until Brothers & Janzen (1999) studied a new series of male and female *P. primaeva* that the proper placement for this genus was discovered, and that the Dominican amber fossil described by Prentice *et al.* (1996) was congeneric. In fact, it is now understood that *Pristapenesia* also includes two of the modern species (Azevedo *et al.*, 2011). Subsequently, scolybythids have been discovered in numerous deposits, virtually all being represented by inclusions in amber with the sole exception of two species from Liaoning, China (Cai *et al.*, 2012). Cretaceous scolybythids have been discussed and described from Barremian Lebanese amber (Prentice *et al.*, 1996; Engel & Grimaldi, 2007a; *vide* Maksoud *et al.*, 2014, on recent dating of these deposits), Barremian Jordanian amber (Kaddumi, 2005: which appears to be an individual of *Zapenesia* Engel & Grimaldi), Albian Spanish amber (Engel *et al.*, 2013), Turonian New Jersey amber (Engel & Grimaldi, 2007a), and Campanian Canadian amber (McKellar & Engel, 2012; Engel *et al.*, 2013) (Table 1). The genus *Cretabythus* Evans in Late Cretaceous Taimyrian amber, at times suspected of being a scolybythid (Evans, 1973), is almost assuredly a primitive bethylid (Carpenter, 1986; Rasnitsyn, 1988; Engel *et al.*, in prep.). The Paleogene and Neogene diversity has included until now only three species — *P. primaeva* in the Middle Eocene amber of the Baltic and Rovno regions (Brues, 1933; Brothers & Janzen, 1999; Perkovsky & Rasnitsyn, 2013), *Eobythus patriciae* Lacau *et al.* in Early Eocene amber of the Paris Basin (Lacau *et al.*, 2000), and *P. inopinata* (Prentice *et al.*) in Early Miocene amber from the Dominican Republic (Prentice *et al.*, 1996). It should be noted that the genus *Eobythus* Lacau *et al.* (2000) is almost assuredly a synonym of *Pristapenesia* and its sole species should be transferred to the latter genus (*vide etiam* Engel & Grimaldi, 2007a; Engel *et al.*, 2013).

Here is described a new species of *Clystospesnella* recently identified from a single female preserved in Early Miocene amber of the Dominican Republic. This is the first

Table 1. Hierarchical classification of Recent and fossil Scolebythidae (Chrysoidea), and general summary of temporal and geographical records (updated from Engel *et al.*, 2013).

| | |
|---|--|
| Family SCOLEBYTHIDAE Evans | |
| Subfamily SCOLEBYTHINAE Evans | |
| Genus <i>Clystopsenella</i> Kieffer | |
| <i>C. longiventris</i> Kieffer | Belize, Brazil, Colombia, Costa Rica, Panamá |
| † <i>C. mirabilis</i> , n. sp. | Dominican amber (Miocene) |
| Genus <i>Scolebythus</i> Evans | |
| <i>S. madecassus</i> Evans | Madagascar |
| Subfamily PRISTAPENESIINAE Engel <i>et al.</i> | |
| Genus <i>Ycaploca</i> Nagy | |
| <i>Y. evansi</i> Nagy | South Africa, Australia |
| <i>Y. fijianus</i> Beaver | Fiji |
| Genus † <i>Boreobythus</i> Engel & Grimaldi | |
| † <i>B. turonius</i> Engel & Grimaldi | New Jersey amber (Turonian) |
| Genus † <i>Libanobythus</i> Prentice & Poinar | |
| † <i>L. milkii</i> Prentice & Poinar | Lebanese amber (Barremian) |
| Genus † <i>Ectenobythus</i> Engel <i>et al.</i> | |
| † <i>E. iberiensis</i> Engel <i>et al.</i> | Spanish amber (Albian) |
| Genus † <i>Necrobythus</i> Engel <i>et al.</i> | |
| † <i>N. pulcher</i> Engel <i>et al.</i> | Canadian amber (Campanian) |
| Genus † <i>Sphakelobythus</i> Engel <i>et al.</i> | |
| † <i>S. limnopous</i> Engel <i>et al.</i> | Canadian amber (Campanian) |
| Genus † <i>Zapenesia</i> Engel & Grimaldi | |
| † <i>Z. libanica</i> Engel & Grimaldi | Lebanese & Jordanian amber (Barremian) |
| Genus † <i>Uliobythus</i> Engel & Grimaldi | |
| † <i>U. terpsichore</i> Engel & Grimaldi | Lebanese amber (Barremian) |
| Genus † <i>Eobythus</i> Lacau <i>et al.</i> | |
| † <i>E. patriciae</i> Lacau <i>et al.</i> | Parisian amber (Eocene) |
| Genus <i>Pristapenesia</i> Brues | |
| † <i>P. primaeva</i> Brues | Baltic & Rovno amber (Eocene) |
| † <i>P. inopinata</i> (Prentice & Poinar) | Dominican amber (Miocene) |
| <i>P. asiatica</i> Azevedo <i>et al.</i> | China, Thailand |
| <i>P. stricta</i> (Azevedo) | Brazil |
| Genus † <i>Mirabythus</i> Cai <i>et al.</i> | |
| † <i>M. lechrius</i> Cai <i>et al.</i> | China (Barremian) |
| † <i>M. liae</i> Cai <i>et al.</i> | China (Barremian) |

fossil record of the genus as well as for the subfamily Scolebythinae, and although *Clystopsenella* are well known from Central America today (*e.g.*, Cambra & Azevedo, 2003; Engel, 2005), they have not been encountered throughout the Caribbean. It would therefore appear that *Clystopsenella*, like *Pristapenesia*, was once a component of the ancient forests of Hispaniola, but disappeared during the intervening geological stages.

MATERIAL AND METHODS

The fossil described herein was located in an average-sized, irregular piece of light yellowish orange amber, representing a small runnel with various flows. The wasp is positioned in the direction of the flows and situated near the border between different runnel sections and with its metasomal apex near a natural break in the piece. In order to obtain a clear view of the wasp, the piece was trimmed and polished to a size of approximately 13 mm in length and 13 mm in maximum height. The final piece has

a roughly trapezoidal cross-section, with a maximum depth of 8.5 mm, and a depth of approximately 7 mm at the level of the wasp. A polished plane was prepared along the left side of the wasp, and another parallel with its dorsal surface (Figs. 1, 2). A ventral view was not possible owing to the position of the wasp within the flows of the piece and at the border between runnel sections, nor was it possible to polish the surface to its posterior as the apex of the metasoma and ovipositor are at that surface. The opposing end was polished to provide a clear view of the face directly onward. The right side of the wasp is also situated along an internal flow and fracture and therefore no preparation was possible to allow a view from that direction. Fortunately, the piece is remarkably clear of debris and there is little that hinders a suitable view of the fossil. As noted, the wasp is preserved in line with the runnel flow, and has its wings reclined over the body (Figs. 1, 2). The legs are tucked under the body and extend slightly ventrally from the wasp's long axis. The antennae are curled outward and around the sides of the head, and the metasoma is gradually bent upward beginning at about metasomal segments III and IV, such that the terminus is nearly orthogonal to the longitudinal axis of the body (Fig. 1). There is a single syninclusion, a small barklouse (Psocoptera) to the right of the metasomal apex and away from the wasp at the internal flow's surface.

The origin and age of Dominican amber has been discussed at length by Iturralde-Vinent & MacPhee (1996, 1999), Grimaldi (1995), and Grimaldi & Engel (2005), and this deposit is one of the most prolific of Neogene ambers. A Canon 7D digital camera and an Infinity K-2 long-distance microscope lens were used to capture the images presented here. The specimen was measured by means of an ocular micrometer through an Olympus SZX-12 stereomicroscope. Morphological terminology follows that used in earlier studies of fossil Scolebythidae (Engel & Grimaldi, 2007a; Engel *et al.*, 2013). The descriptions are presented here in the context of establishing a more robust pattern of character distributions and taxonomic diversity (both temporal and spatial) for scolebythids (*e.g.*, Grimaldi & Engel, 2007), and as a framework for discussing the evolutionary history of the group.

SYSTEMATIC PALEONTOLOGY

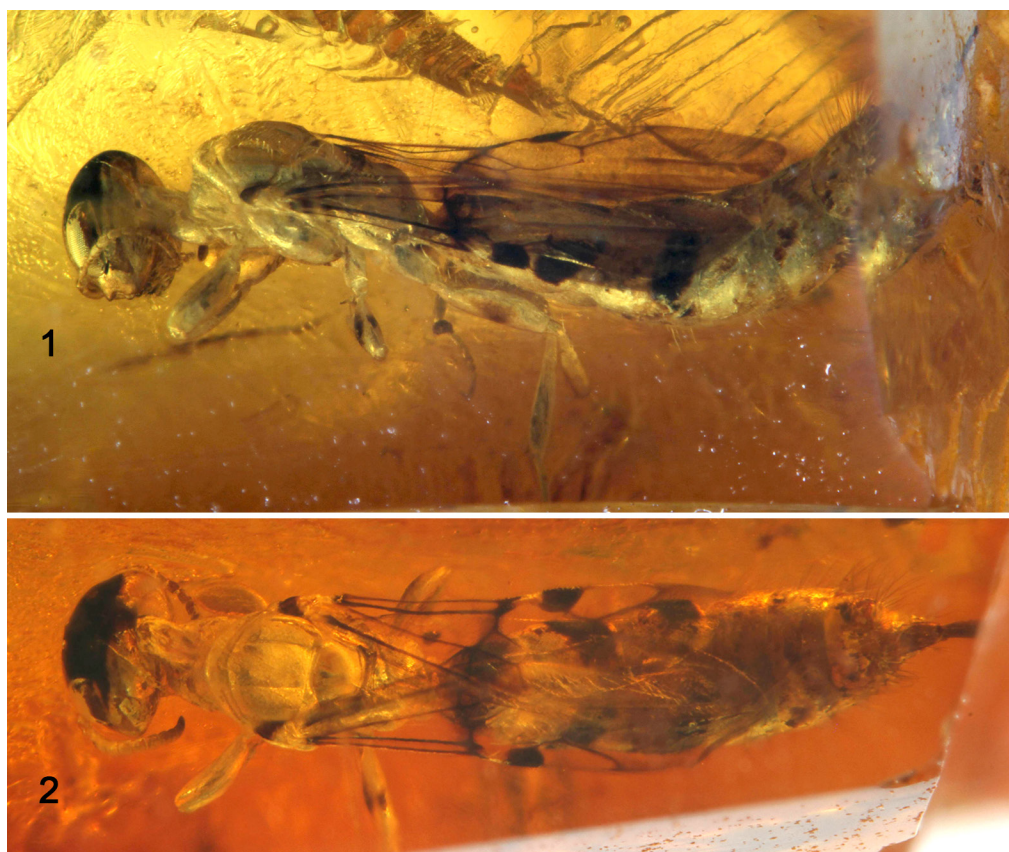
Genus *Clystopsenella* Kieffer

Clystopsenella mirabilis Engel, new species

ZooBank: urn:lsid:zoobank.org:act:9282E1F6-6420-4398-A833-E50DEF729701

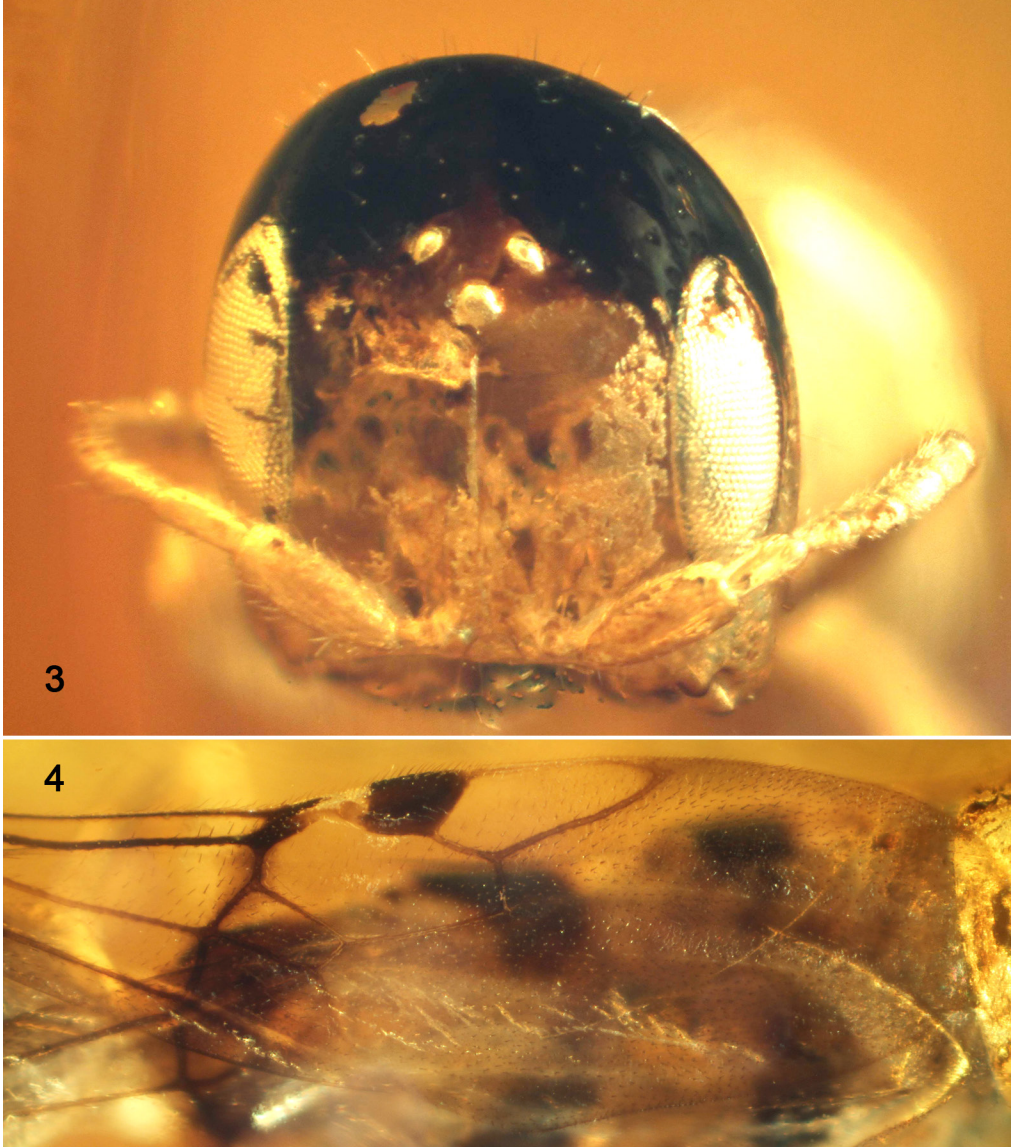
(Figs. 1–4)

DIAGNOSIS: New fossil species is slightly smaller than its congener (length of body and forewing 5.9 mm and 3.1 mm, respectively, in the fossil versus 7–10 mm and 4–6 mm, respectively, for *Clystopsenella longiventris* Kieffer), has legs concolorous with mesosoma [legs are distinctly lighter than mesosoma in *C. longiventris* (Fig. 5)], has head that is slightly longer than wide (Fig. 3) (slightly wider than long in *C. longiventris*), head largely yellow brown except black on vertex and above level of ocellar triangle (Fig. 3) (dark brown to black throughout, sometimes with three streaks of lighter coloration on vertex in *C. longiventris*); has much shorter pronotal disc (disc is about 0.21x mesoscutal length, versus 0.51x in *C. longiventris*); and margin of pterostigma inside marginal cell is straight [convex in *C. longiventris* (Fig. 5)].



Figures 1–2. Photomicrographs of holotype (AMNH DR-924-H-211) female of *Clystopsenella mirabilis*, new species, in Early Miocene amber from the Dominican Republic. 1. Lateral habitus. 2. Dorsal habitus.

DESCRIPTION: ♀: Total body length, excluding ovipositor, *ca.* 5.9 mm; forewing length 3.1 mm. Head broad apically (Fig. 3), slightly longer than wide, length 0.94 mm, width (across compound eyes) 0.88 mm; frons width 0.59 mm; mandible with four sharp teeth in an oblique series, apical tooth largest. Clypeus short, strongly transverse, much shorter than diameter of antennal torulus (Fig. 3), apical margin without median lobe but with faint, narrow apicolateral convexities (weaker than those in *C. longiventris*). Malar space distinctly long, more than three-quarters basal mandibular width, basal mandibular width 0.19 mm, malar space 0.16 mm. Frontal line weakly carinate from median ocellus to near clypeal apex; frontal prominence between antennal toruli absent; face lateral to antennal toruli gently depressed for reception of scape; antennal toruli separated by about one torular diameter. Antennal scape slightly curved, thicker than other antennal articles; pedicel conical, length slightly more than twice apical width; 11 flagellomeres, each slightly longer than wide. Inner margins of compound eyes straight, parallel (Fig. 3); compound eye length 0.55 mm (distance between compound eyes approximately 1.1x compound eye length); compound eye bare; ocellar triangle positioned below upper tangent of compound eyes (Fig. 3), ocellar triangle obtuse (width 0.20 mm, length 0.14 mm), distance between ocellar triangle



Figures 3–4. Photomicrographs of holotype (AMNH DR-924-H-211) female of *Clystopenella mirabilis*, new species. **3.** Facial view. **4.** Detail of apical forewing venation.

and peak of vertex in frontal view 0.24 mm (distance 1.2x ocellar triangle width or 4x diameter of median ocellus); ocellocular distance 0.22 mm; diameter of median ocellus 0.06 mm. Vertex arched in frontal view (Fig. 3); occipital carina absent; gena slightly broader than compound eye. Pronotum short (Fig. 2), with anterior border declivitous (Fig. 1); pronotal disc short, medial length of disc 0.11 mm (pronotal disc about 0.21x medial length of mesoscutum); pronotal collar absent such that elongate propleura exposed dorsally; mesoscutum wider than long, medial length 0.53 mm, intertegular distance 0.69 mm; notauli distinctly impressed, complete and parallel throughout length; parapsidal lines more weakly impressed (most easily visible under lateral lighting), complete and parallel throughout length, extending posteriorly to anterolat-



Figure 5. Lateral habitus of female of *Clystospenella longiventris* Kieffer from the Orange Walk District of northwestern Belize (as reported by Engel, 2005).

eral angle of axilla; notauli divide mesoscutum into roughly equal thirds; parapsidal lines divide portion of mesoscutum outside of notaulus into outer third and inner two-thirds; mesoscutellum separated from mesoscutum by transverse furrow composed of two widely separated pits, wider than long, about two-thirds length of mesoscutum; metanotum exceedingly short; metapostnotum partially effaced, short, subtriangular, and slightly concave centrally, about 0.4x as long as wide. Legs with procoxae flattened, protochanters inserted laterally; femora slightly swollen (profemur not as pronouncedly swollen as in *C. longiventris*) and metafemur laterally flattened; tibial spur formula 1-2-2; pretarsal claws simple, arolium absent. Forewing with R1 present; marginal cell closed (Fig. 4), with acutely rounded apex, apex curving away from anterior margin of wing by little more than one vein width, weakly appendiculate; Rs tubular throughout; prestigma slightly thickened; pterostigma slightly longer than broad, subtriangular and broader apically, posterior border weakly convex, border inside marginal cell straight and slightly oblique, r-rs arising at widest point near apical

one-third (Fig. 4); basal vein distad 1cu-a by one vein width, straight, longer than first abscissa Rs, forming angle with first abscissa Rs; Rs+M tubular, first abscissa distinctly shorter than that beyond 1m-cu; second abscissa Rs slightly longer than first abscissa Rs and about as long as r-rs; transverse tangent from second abscissa Rs slightly apicad of pterostigmal apex; apicalmost abscissa Rs (that forms posterior border of marginal cell) almost three times length of r-rs; submarginal cell comparatively short, about as long as marginal cell (not greatly longer than marginal cell); discoidal cell (medial cell) closed (Fig. 4), with 1m-cu tubular, cell longer than wide; subdiscoidal cell narrowly open in posterior apical corner; Cu basad 1m-cu tubular but nebulous distad 1m-cu. Hind wing with 4 distal hamuli. Metasoma slender and long (Figs. 1, 2); sternum V with medioapical, raised, subtriangular area anterior to marginal zone.

Integument of head glabrous and somewhat shining, impunctate except for minute, shallow depressions around some setal bases; mesosoma and legs largely glabrous and somewhat shining except metanotum with faint, widely spaced, longitudinal striae, metapostnotum partially effaced, basally with a few transverse striae running along border with metanotum otherwise glabrous, propodeum weakly and finely imbricate and laterally with short, transverse striae in depressions corresponding to placement of fused metathoracic-propodeal suture. Metasoma weakly imbricate except sternum V with more polished surface on medioapical, raised, subtriangular patch.

Pubescence generally sparse and short, particularly sparse on head except along ventral margin of mandible. Mesosoma with setae short and sparse except those on pleura, which are longer. Metasoma with generally sparse and short setae, those setae present laterally are a bit more numerous and longer, particularly and progressively so on more apical segments such that apicolateral setae on terga V and VI and setae in apical half of tergum VI are numerous, long, and largely erect; sterna with sparse short, erect setae progressively longer on more apical sterna, apicolateral setae on sterna V and VI long and distinctly more numerous, sternum V with patches of dense, short, fine, and appressed setae lateral to medial subtriangular elevation.

Coloration poorly preserved due to clearing of integument in areas (note that metasomal coloration is likely largely augmented by taphonomic factors and so has not been used in diagnosis of species); head and mouthparts generally yellow brown except face above ocellar triangle and vertex from above, which are black (Figs. 1–3); antenna light yellow brown. Mesosoma and legs largely yellow brown except with areas of brown medially on meso- and metafemora. Tegula and humeral plate dark brown; axillary sclerites yellow brown; veins largely brown to dark brown except apicalmost abscissa of Rs+M, 1m-cu, apex of prestigma, and base of pterostigma, which are lighter (Figs. 2, 4); wing membranes hyaline and slightly tinged brown, with darker streak in membrane extending as a transverse band from about base of prestigma and origin of Rs to posterior margin around level of 1cu-a and in basal halves of discoidal (medial) and subdiscoidal (cubital) cells (Figs. 2, 4), also slightly more infumate along anterior margin at apex of marginal cell (Fig. 4). Metasoma generally light yellow brown except anterior half of first tergum, which is brown, and posterior one-third of terga II and III, which are brown except interrupted medially.

♂: *Latet.*

HOLOTYPE: ♀, AMNH DR-924-H-211; Dominican Republic, Early Miocene amber, specific mine unknown; deposited in the amber fossil collection of the Division of Invertebrate Zoology, American Museum of Natural History, New York.

ETYMOLOGY: The specific epithet is the Latin word *mirabilis*, meaning, “wonderful”.

DISCUSSION

The specimen described here can easily be placed within *Clystopenella* owing to the combined presence of an elongate malar space, facial depressions lateral to the antennal toruli, an obtuse ocellar triangle, two pits in the mesoscutal-mesoscutellar furrow, a 1-2-2 tibial spur formula, and a marginal cell apex separated from the anterior margin of the wing, along with the absence of an occipital carina and the partially obliterated metapostnotum. Most importantly, the fossil shares with *C. longiventris* the characteristic presence of appressed setal patches on the fifth metasomal sternum and bordering a slightly elevated polished area, a feature unique to *Clystopenella* among scolebythids. *Clystopenella longiventris* exhibits variation in size and color across its vast range, and Gauld (1995) suggested that these forms were specifically distinct. Cambra & Azevedo (2003), however, indicated that the color variants intergraded and, most critically, these do not cluster geographically. Whereas *C. longiventris* was for a long while believed to only occur in southern and eastern Brazil (Kieffer, 1911; Evans, 1963; Azevedo, 1999), the species has been documented from across Central America (Gauld, 1995; Cambra & Azevedo, 2003; Engel, 2005) and northern South America (Fernandez *et al.*, 2002), shattering the notion that scolebythids were a strictly austral group. Moreover, the presence of scolebythids in fossil deposits scattered throughout the Northern Hemisphere and as recently as the Early Miocene further demonstrates that their modern occurrences are not the result of Gondwanan vicariance, much as is the case for several purported insect examples of 'austral disjunct distributions' (*e.g.*, Grimaldi & Engel, 2005, 2006a). The diversity of and relationships among fossil Scolebythidae (Fig. 6) underscores the reality that the family is today relict. Furthermore, those available fossils also imply that the paleodiversity documented falls far short of adequately reflecting the true diversity, and there was at one time a greater variety of not only species and genera, but of morphological disparity across the clade (Engel *et al.*, 2013). The relationships suppose a lengthy ghost lineage for the Scolebythinae (Fig. 6), for which *C. mirabilis* at least partially, albeit trivially, narrows the gap. It is peculiar that among the plethora of Cretaceous Scolebythidae, all are of the Pristapenesiinae, leaving one to wonder why the sampling should be skewed away from Scolebythinae. It is possible that stem-group scolebythines might be confused easily with primitive pristapenesiines which have more completely developed wing venation (*e.g.*, *Boreobythus turonius* Engel & Grimaldi), and where subtle features such as the number of tibial spurs or the presence of the facial depressions for receipt of the antennal scape are obscured. Regardless, the phylogenetic, temporal, and geographic distribution of the available fossils emphasizes the need for continued paleontological exploration.

It is fairly common to discover surviving genera in Dominican amber that are either not present across modern Hispaniola, do not occur in the Greater or Lesser Antilles (save for Trinidad and Tobago which are positioned on the South American continental shelf), or, in more extreme examples, are no longer found in the Western Hemisphere. Examples of such localized extinctions include (this list is by no means exhaustive but merely highlights examples across the phylogenetic spectrum of Insecta) bristletails of the genus *Trinemurodes* Silvestri (Sturm & Mendes, 1998); silverfish of the genus *Hemitrinemura* Mendes (Mendes & Poinar, 2004); termites of the genera *Mastotermes* Froggatt, *Dolichorhinotermes* Snyder & Emerson, *Coptotermes* Wasmann, and *Constrictotermes* Holmgren (Krishna & Grimaldi, 1991, 2009); barklice of the genus *Belaphopsocus* Badonnel (Grimaldi & Engel, 2006b); termite bugs of the genus *Termitaradus* Myers (Grimaldi & Engel, 2008; Engel, 2009a); stag beetles of the genus *Syndesus*

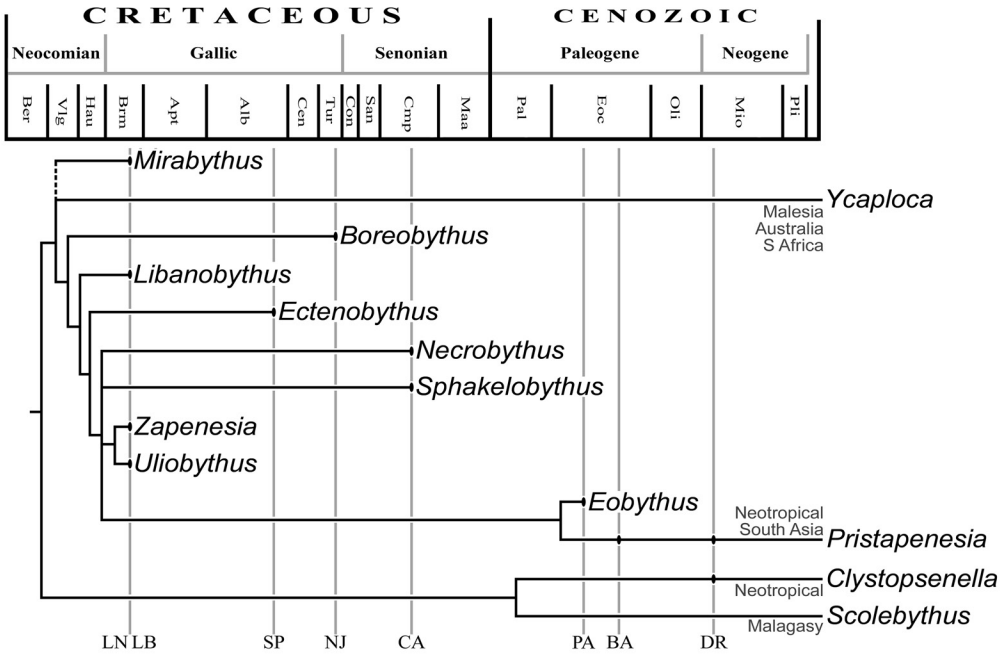


Figure 6. Phylogeny of Scolebythidae (after Engel *et al.*, 2013), with fossil deposits indicated and the distribution of modern species summarized near the terminus of each branch. Abbreviations for deposits are: DR, Dominican Republic amber; BA, Baltic amber (includes also the records from the generally contemporaneous Rovno amber); PA, Parisian amber; CA, Canadian amber; NJ, New Jersey amber; SP, Spanish amber; LB, both Lebanese amber deposits (include also the Early Cretaceous Jordanian record of *Zapenesia* Engel & Grimaldi); LN, Liaoning, China.

MacLeay (Woodruff, 2009); the histerid genus *Trypanaeus* Eschscholtz (Chatzimanolis *et al.*, 2006); weevils of the genera *Proeces* Schönherr, *Dryophthorus* Germar, and *Stenommatius* Wollaston (Davis & Engel, 2006, 2007); the dustywing genus *Spiloconis* Enderlein (Meinander, 1998; Engel & Grimaldi, 2007b; Grimaldi *et al.*, 2013a); valseguyid and carnid flies (Grimaldi, 1991, 1997); window flies of the genus *Metatrachia* Coquillett (Yeates & Grimaldi, 1993); parasitoid wasps of the genera *Ophrynopus* Kownow, *Ceraphron* Jurine, *Masona* van Achterberg, *Leucospis* Fabricius, *Leptofoenus* Smith, *Bocchus* Ashmead, *Ceratochrysis* Cooper, and *Pristapenesia* Brues (Olmi, 1989; Prentice *et al.*, 1996; Brothers & Janzen, 1999; van Achterberg, 2001; Engel, 2002, 2006, 2008, 2009b, 2013); fig wasps of the genera *Pegoscapus* Cameron and *Tetrapus* Mayr (Peñalver *et al.*, 2006); the ant genera *Leptomymex* Mayr, *Azteca* Forel, *Neivomyrmex* Borgmeier, and *Paraponera* Smith (Baroni Urbani, 1980; Wilson, 1985, 1988; Baroni Urbani & Wilson, 1987); apoid wasps of the genera *Lindenius* Lepeletier & Brullé and *Pison* Spinola (Antropov & Pulawski, 1996; Bennett & Engel, 2006, 2008); and bees of the genera *Chilicola* Spinola, *Neocorynura* Schrottky, *Thaumatostoma* Smith, *Anthophorula* Cockerell, and *Euglossa* Latreille (Engel, 1995, 1999a, 1999b, 1999c; Engel *et al.*, 2012), among many other arthropod lineages. To this long list of regional extinctions may be added the genus *Clystopsenella*, but given how little we know of the true distribution for *C. longiventris* one might wonder if in time it too shall reveal itself somewhere in the Greater Antilles, much as some lineages first known from amber fossils are later found

in the modern fauna (e.g., Schuh & Polhemus, 1980; Lawrence, 1995; Grimaldi & Engel, 2006a; Wild & Cuzzo, 2006; Grimaldi *et al.*, 2013b).

ACKNOWLEDGEMENTS

I am grateful to David A. Grimaldi for bringing the specimen to my attention and for his patience over the several years it took to get this work into print; to Jennifer C. Thomas for assistance with microphotography; to my students for their many virtues; and to two reviewers whose comments refined this final version. This is a contribution of the Division of Entomology, University of Kansas Natural History Museum.

REFERENCES

- Achterberg, C., van. 2001. The first known fossil Masoninae (Hymenoptera: Braconidae) from Miocene Dominican amber. *Zoologische Mededelingen* 75(21): 393–396.
- Aguiar, A.P., A.R. Deans, M.S. Engel, M. Forshage, J.T. Huber, J.T. Jennings, N.F. Johnson, A.S. Lelej, J.T. Longino, V. Lohrmann, I. Mikó, M. Ohl, C. Rasmussen, A. Taeger, & D.S.K. Yu. 2013. Order Hymenoptera. *Zootaxa* 3703(1): 51–62.
- Antropov, A.V., & W.J. Pulawski. 1996. *Pison antiquum*, a new species from Dominican amber (Hymenoptera: Sphecidae). *Journal of Hymenoptera Research* 5: 16–21.
- Azevedo, C.O. 1999. A key to world species of Scolebythidae (Hymenoptera: Chrysidioidea), with description of a new species of *Dominibythus* from Brazil. *Journal of Hymenoptera Research* 8(1): 1–5.
- Azevedo, C.O., Z. Xu, & R.A. Beaver. 2011. A new species of *Pristapenesia* Brues (Hymenoptera, Scolebythidae) from Asia. *Zootaxa* 2750: 60–64.
- Baroni Urbani, C. 1980. The first fossil species of the Australian ant genus *Leptomymex* in amber from the Dominican Republic (Amber Collection Stuttgart: Hymenoptera, Formicidae. III: Leptomymecini). *Stuttgarter Beiträge zur Naturkunde, Serie B, Geologie und Paläontologie* 62: 1–10.
- Baroni Urbani, C., & E.O. Wilson. 1987. The fossil members of the ant tribe Leptomymecini (Hymenoptera: Formicidae). *Psyche* 94(1–2): 1–8.
- Beaver, R.A. 2002. A new species of *Ycaploca* (Hym., Scolebythidae) from Fiji. *Entomologist's Monthly Magazine* 138(1656–1659): 139–142.
- Bennett, D.J., & M.S. Engel. 2006. A new moustache wasp in Dominican amber, with an account of apoid wasp evolution emphasizing Crabroninae (Hymenoptera: Crabronidae). *American Museum Novitates* 3529: 1–10.
- Bennett, D.J., & M.S. Engel. 2008. *Pison menkei*, a new crabronid wasp in Dominican amber (Hymenoptera: Crabronidae). *Beiträge zur Entomologie* 58(1): 113–119.
- Brothers, D.J. 1981. Note on the biology of *Ycaploca evansi* (Hymenoptera: Scolebythidae). *Journal of the Entomological Society of Southern Africa* 44(1): 107–108.
- Brothers, D.J., & J.-W. Janzen. 1999. New generic synonymy in Scolebythidae, with redescription of both sexes of *Pristapenesia primaeva* Brues from Baltic amber (Hymenoptera: Chrysidioidea). In: Vršanský, P. (Ed.), *Proceedings of the First Palaeoentomological Conference, Moscow, 1998*: 17–26. AMBA Projects International; Bratislava, Slovakia; 199+[2] pp.
- Brues, C.T. 1933. The parasitic Hymenoptera of the Baltic amber, Part 1. *Bernstein Forschungen* 3: 4–178.
- Cai, Y.-P., Y.-Y. Zhao, C.-K. Shih, & D. Ren. 2012. A new genus of Scolebythidae (Hymenoptera: Chrysidioidea) from the Early Cretaceous of China. *Zootaxa* 3504: 56–66.
- Cambra T., R.A., & C.O. Azevedo. 2003. First Central American records of *Clystopenella longiventris* (Hymenoptera: Scolebythidae) with comments on the variation of the species. *Entomotropica* 18(2): 147–148.
- Carpenter, J.M. 1986. Cladistics of the Chrysidioidea (Hymenoptera). *Journal of the New York Entomological Society* 94(3): 303–330.

- Chatzimanolis, S., M.S. Caterino, & M.S. Engel. 2006. The first fossil of the subfamily Trypanaeinae (Coleoptera: Histeridae): A new species of *Trypanaeus* in Dominican amber. *Coleopterists Bulletin* 60(4): 333–340.
- Davis, S.R., & M.S. Engel. 2006. Dryophthorine weevils in Dominican amber (Coleoptera: Curculionidae). *Transactions of the Kansas Academy of Science* 109(3–4): 191–198.
- Davis, S.R., & M.S. Engel. 2007. Cossonine weevils in Dominican amber (Coleoptera: Curculionidae). *Linzer Biologische Beiträge* 39(2): 803–820.
- Day, M.C. 1977. A new genus of Plumariidae from southern Africa, with notes on Scolebythidae (Hymenoptera, Chrysidoidea). *Cimbebasia, Series A (Natural History)* 4(10): 171–177.
- Engel, M.S. 1995. *Neocorynura electra*, a new fossil bee species from Dominican amber (Hymenoptera: Halictidae). *Journal of the New York Entomological Society* 103(3): 317–323.
- Engel, M.S. 1999a. The first fossil *Euglossa* and phylogeny of the orchid bees (Hymenoptera: Apidae; Euglossini). *American Museum Novitates* 3272: 1–14.
- Engel, M.S. 1999b. A new xeromelissine bee in Tertiary amber of the Dominican Republic (Hymenoptera: Colletidae). *Entomologica Scandinavica* 30(4): 453–458.
- Engel, M.S. 1999c. *Megachile glaesaria*, the first megachilid bee fossil from amber (Hymenoptera: Megachilidae). *American Museum Novitates* 3276: 1–13.
- Engel, M.S. 2002. The first leucospid wasp from the fossil record (Hymenoptera: Leucospidae). *Journal of Natural History* 36(4): 435–441.
- Engel, M.S. 2005. The wasp genus *Clystopsenella* in Belize (Hymenoptera: Scolebythidae). *Journal of the Kansas Entomological Society* 78(2): 186–188.
- Engel, M.S. 2006. A new cuckoo wasp of the genus *Ceratochrysis* in amber from the Dominican Republic (Hymenoptera: Chrysididae). *Polskie Pismo Entomologiczne* 75(4): 499–504.
- Engel, M.S. 2008. An orussid wood wasp in amber from the Dominican Republic (Hymenoptera: Orussidae). *Transactions of the Kansas Academy of Science* 111(1–2): 39–44.
- Engel, M.S. 2009a. A new termite bug in Miocene amber from the Dominican Republic (Hemiptera, Termitaphididae). *ZooKeys* 45: 61–68.
- Engel, M.S. 2009b. The first fossil leptofoenine wasp (Hymenoptera, Pteromalidae): A new species of *Leptofoenus* in Miocene amber from the Dominican Republic. *ZooKeys* 13: 57–66.
- Engel, M.S. 2013. A ceraphronid wasp in Early Miocene amber from the Dominican Republic (Hymenoptera: Ceraphronidae). *Novitates Paleoentomologicae* 2: 1–6.
- Engel, M.S., & D.A. Grimaldi. 2007a. Cretaceous Scolebythidae and phylogeny of the family (Hymenoptera: Chrysidoidea). *American Museum Novitates* 3568: 1–16.
- Engel, M.S., & D.A. Grimaldi. 2007b. The neuropterid fauna of Dominican and Mexican amber (Neuropterida: Megaloptera, Neuroptera). *American Museum Novitates* 3587: 1–58.
- Engel, M.S., D.A. Grimaldi, V.H. Gonzalez, I.A. Hinojosa-Díaz, & C.D. Michener. 2012. An exomalopsine bee in Early Miocene amber from the Dominican Republic (Hymenoptera: Apidae). *American Museum Novitates* 3758: 1–16.
- Engel, M.S., J. Ortega-Blanco, & R.C. McKellar. 2013. New scolebythid wasps in Cretaceous amber from Spain and Canada, with implications for the phylogeny of the family (Hymenoptera: Scolebythidae). *Cretaceous Research* 46: 31–42.
- Evans, H.E. 1963. A new family of wasps. *Psyche* 70(1): 7–16.
- Evans, H.E. 1973. Cretaceous aculeate wasps from Taimyr, Siberia (Hymenoptera). *Psyche* 80(3): 166–178.
- Evans, H.E., C. Kugler, & W.L. Brown, Jr. 1979. Rediscovery of *Scolebythus madecassus*, with a description of the male and of the female sting apparatus (Hymenoptera: Scolebythidae). *Psyche* 86(1): 45–51.
- Fernandez C., F., C.E. Sarmiento M., & D.F. Campos L. 2002. First records of the wasps [sic] families Megalyridae and Scolebythidae (Hymenoptera: Megalyroidea, Chrysidoidea) for northern South America. *Revista Colombiana de Entomologia* 28(2): 213.
- Gauld, I.D. 1995. Scolebythidae. In: Hanson, P.E., & I.D. Gauld (Eds.), *The Hymenoptera of Costa Rica*: 468–470. Oxford University Press; Oxford, UK; xx+893 pp.
- Grimaldi, D.A. 1991. Mycetobiine woodgnats (Diptera: Anisopodidae) from the Oligo-Miocene amber of the Dominican Republic, and Old World affinities. *American Museum Novitates*

- 3014: 1–24.
- Grimaldi, D.A. 1995. The age of Dominican amber. In: Anderson, K.B., & J.C. Crelling (Eds.), *Amber, Resinite, and Fossil Resins*: 203–217. American Chemical Society; Washington, D.C.; xvii+297 pp.
- Grimaldi, D. 1997. The bird flies, genus *Carnus*: Species revision, generic relationships, and a fossil *Meoneura* in amber (Diptera: Carnidae). *American Museum Novitates* 3190: 1–30.
- Grimaldi, D., & M.S. Engel. 2005. *Evolution of the Insects*. Cambridge University Press; Cambridge, UK; xv+755 pp.
- Grimaldi, D., & M.S. Engel. 2006a. Extralimital fossils of the “Gondwanan” family Sphaeropsocidae (Insecta: Psocodea). *American Museum Novitates* 3523: 1–18.
- Grimaldi, D., & M.S. Engel. 2006b. Fossil Liposcelididae and the lice ages (Insecta: Psocodea). *Proceedings of the Royal Society, Series B, Biological Sciences* 273(1586): 625–633.
- Grimaldi, D., & M.S. Engel. 2007. Why descriptive science still matters. *BioScience* 57(8): 646–647.
- Grimaldi, D.A., & M.S. Engel. 2008. A termite bug in Early Miocene amber of the Dominican Republic (Hemiptera: Termitaphididae). *American Museum Novitates* 3619: 1–10.
- Grimaldi, D., M.S. Engel, P.C. Nascimbene, & H. Singh. 2013a. Coniopterygidae (Neuroptera: Aleuropteryginae) in amber from the Eocene of India and the Miocene of Hispaniola. *American Museum Novitates* 3770: 1–20.
- Grimaldi, D.A., M.S. Engel, & H. Singh. 2013b. Bugs in the biogeography: Leptosaldinae (Heteroptera: Leptopodidae) in amber from the Miocene of Hispaniola and Eocene of India. *Journal of the Kansas Entomological Society* 86(3): 226–243.
- Iturralde-Vinent, M.A., & R.D.E. MacPhee. 1996. Age and paleogeographical origin of Dominican amber. *Science* 273(5283): 1850–1852.
- Iturralde-Vinent, M.A., & R.D.E. MacPhee. 1999. Paleogeography of the Caribbean Region: Implications for Cenozoic biogeography. *Bulletin of the American Museum of Natural History* 238: 1–95.
- Kaddumi, H.F. 2005. *Amber of Jordan: The Oldest Prehistoric Insects in Fossilized Resin*. Privately published [as ‘Eternal River Museum of Natural History’, but this is a private collection in a personal home]; Amman, Jordan; 224 pp.
- Kieffer, J.J. 1911. Nouveaux bethylides et dryinides exotiques du British Museum de Londres. *Annales de la Société Scientifique de Bruxelles* 35(2): 200–233.
- Krishna, K., & D. Grimaldi. 1991. A new fossil species from Dominican amber of the living Australian termite genus *Mastotermes* (Isoptera: Mastotermitidae). *American Museum Novitates* 3021: 1–10.
- Krishna, K., & D. Grimaldi. 2009. Diverse Rhinotermitidae and Termitidae (Isoptera) in Dominican amber. *American Museum Novitates* 3640: 1–48.
- Lacau, S., A. Nel, C. Villemant, J.-J. Menier, M.J. Orliac, & G. de Plöeg. 2000. A fossil Scolebythidae from the lowermost Eocene amber of France (Insecta: Hymenoptera). *Annals of the Entomological Society of America* 93(4): 701–706.
- Lawrence, J.F. 1995. *Electribius* Crowson: Alive and well in Mesoamerica, with notes on Ctesibus Champion and the classification of Armatopodidae. In: Pakaluk, J., & S.A. Ślipiński (Eds.), *Biology, Phylogeny, and Classification of Coleoptera: Papers Celebrating the 80th Birthday of Roy A. Crowson*: 411–431. Muzeum i Instytut Zoologii PAN [Polska Akademia Nauk]; Warsaw, Poland; xii+558 pp.
- Maksoud, S., B. Granier, D. Azar, R. Gèze, J.-C. Paicheler, & J.A. Moreno-Bedmar. 2014. Revision of “Falaise de Blanche” (Lower Cretaceous) in Lebanon, with the definition of a Jezzian regional stage. *Carnets de Géologie* 14(18): 401–427.
- McKellar, R.C., & M.S. Engel. 2012. Hymenoptera in Canadian Cretaceous amber (Insecta). *Cretaceous Research* 35: 258–279.
- Meinander, M. 1998. Coniopterygidae (Neuroptera) in amber from the Dominican Republic. *Journal of Neuropterology* 1: 33–36.
- Melo, G.A.R. 2000. Biology of an extant species of the scolebythid genus *Dominibythus* (Hymenoptera: Chrysidoidea: Scolebythidae), with description of its mature larva. In: Austin, A.D., & M. Dowton (Eds.), *Hymenoptera: Evolution, Biodiversity and Biological Control*:

- 281–284. CSIRO [Commonwealth Scientific and Industrial Research Organization]; Collingwood, Australia; xi+468 pp.
- Mendes, L.F., & G.O. Poinar, Jr. 2004. A new fossil Nicoletiidae (Zygentoma, "Apterygota") in Dominican amber. *Proceedings of the Entomological Society of Washington* 106(1): 102–109.
- Nagy, C.G. 1975. A new genus of Scolebythidae (Hymenoptera) from South Africa and Australia. *Journal of the Entomological Society of Southern Africa* 38(1): 75–78.
- Naumann, I.D. 1990. The aculeate wasps and bees (Hymenoptera) of Norfolk and Philip Islands. *Australian Entomological Magazine* 17(1): 17–28.
- Olmí, M. 1989 [1991]. Supplement to the revision of the world Dryinidae (Hymenoptera Chrysidoidea). *Frustula Entomologica* 12(25): 109–395.
- Peñalver, E., M.S. Engel, & D.A. Grimaldi. 2006. Fig wasps in Dominican amber (Hymenoptera: Agaonidae). *American Museum Novitates* 3541: 1–16.
- Perkovsky, E.E., & A.P. Rasnitsyn. 2013. First records of Scolebythidae and Chrysididae (Hymenoptera, Chrysidoidea) in Rovno amber. *Vestnik Zoologii* 47(2): 14–19.
- Prentice, M.A., G.O. Poinar, Jr., & R. Milki. 1996. Fossil scolebythids (Hymenoptera: Scolebythidae) from Lebanese and Dominican amber. *Proceedings of the Entomological Society of Washington* 98(4): 802–811.
- Rasnitsyn, A.P. 1988. An outline of evolution of the hymenopterous insects (order Vespida). *Oriental Insects* 22: 115–145.
- Schuh, R.T., & J.T. Polhemus. 1980. *Saldolepta kistnerorum*, new genus and new species from Ecuador (Hemiptera, Leptopodomorpha), the sister group of *Leptosalda chiapensis*. *American Museum Novitates* 2698: 1–5.
- Sturm, H., & L.F. Mendes. 1998. Two new species of Nicoletiidae (Zygentoma, "Apterygota," Insecta) in Dominican amber. *American Museum Novitates* 3226: 1–11.
- Wild, A.L., & F. Cuzzo. 2006. Rediscovery of a fossil dolichoderine ant lineage (Hymenoptera: Formicidae: Dolichoderinae) and a description of a new genus from South America. *Zootaxa* 1142: 57–68.
- Wilson, E.O. 1985. Invasion and extinction in the West Indian ant fauna: Evidence from the Dominican amber. *Science* 229(4710): 265–267.
- Wilson, E.O. 1988. The biogeography of the West Indian ants (Hymenoptera: Formicidae). In: Liebherr, J.K. (Ed.), *Zoogeography of Caribbean Insects*: 214–230. Cornell University Press; Ithaca, NY; ix+[i]+285 pp.
- Woodruff, R.E. 2009. A new fossil species of stag beetle from Dominican Republic amber, with Australasian connections (Coleoptera, Lucanidae). *Insecta Mundi* 98: 1–10.
- Yeates, D., & D. Grimaldi. 1993. A new *Metatrichia* window fly (Diptera: Scenopinidae) in Dominican amber, with a review of the systematics and biogeography of the genus. *American Museum Novitates* 3078: 1–8.



Pharciphyzelus lacefieldi Beckemeyer & Engel, 2011

NOVITATES PALEOENTOMOLOGICAE

Occasional Contributions to Paleoentomology

Novitates Paleoentomologicae is an international, open access journal that seeks to disseminate the results of research conducted on fossil arthropods, particularly fossil insects, at the University of Kansas. The journal covers all aspects of fossil arthropod research including, but not limited to, comparative morphology, paleobiology, paleoecology, phylogenetics, systematics, taphonomy, and taxonomy.

Novitates Paleoentomologicae was established at the University of Kansas through the efforts of Michael S. Engel, Jaime Ortega-Blanco, and Ryan C. McKellar in 2013 and each article is published as its own number, with issues appearing online as soon as they are ready. Papers are composed using Microsoft Word® and Adobe InDesign® in Lawrence, Kansas, USA.

Editor-in-Chief

Michael S. Engel
University of Kansas

Assistant Editors

Ryan C. McKellar
Royal Saskatchewan Museum

Jaime Ortega-Blanco
Universitat de Barcelona

Bruce S. Lieberman
University of Kansas

Novitates Paleoentomologicae is registered in ZooBank (www.zoobank.org), and archived at the University of Kansas and in Portico (www.portico.org).

<http://journals.ku.edu/paleoent>
ISSN 2329-5880