



Predation by an Antigua Bank Tree Anole, *Anolis leachii* (Duméril and Bibron 1837), on an Introduced Tropical House Gecko, *Hemidactylus mabouia* (Moreau de Jonnés 1818)

Scott J. Trageser¹, Ash Wiscovitch², and Paul Hamilton¹

¹The Biodiversity Group, 10980 W Rutasill Road, Tucson, Arizona 85743, USA (trageser.scott@gmail.com, hamilton@biodiversitygroup.org)

²160 Keonekai Road, Kihei, Hawaii 96753, USA (ash.wisco@gmail.com)

At 1305 h on 12 January 2016, we observed an adult male Antigua Bank Tree Anole (*Anolis leachii*) preying on an adult Tropical House Gecko (*Hemidactylus mabouia*) in Codrington, Barbuda (17°38.384'N, 61°49.007'W). This predation event occurred soon after we placed the non-native gecko on a decorative tree to document its presence with a photograph. The anole descended approximately 3 m from higher in the tree, captured the gecko by grasping it in the pectoral

region (Fig. 1), and consumed it within a period of approximately 4 min. As *A. leachii* is predominately diurnal and *H. mabouia* is chiefly nocturnal, the activity periods for these two species do not naturally overlap or overlap only marginally. Consequently, occasional predation by *A. leachii* on *H. mabouia* is unlikely to have any substantive effect on populations of the latter. To the best of our knowledge, this is the first record of any anole preying on a house gecko.

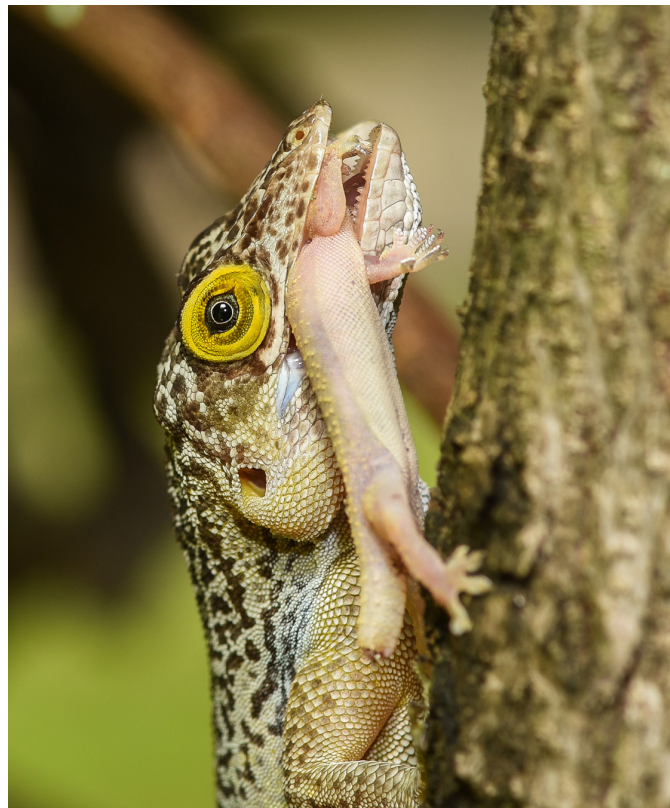


Fig. 1. An adult male Antigua Bank Tree Anole (*Anolis leachii*) preying on an adult Tropical House Gecko (*Hemidactylus mabouia*) in Codrington, Barbuda. Photograph by Scott J. Trageser.